

# Complete Rubber Pty Ltd

## Product Catalogue



[www.completerubber.com.au](http://www.completerubber.com.au)



# Manway Lid Seals

Manway Profiles

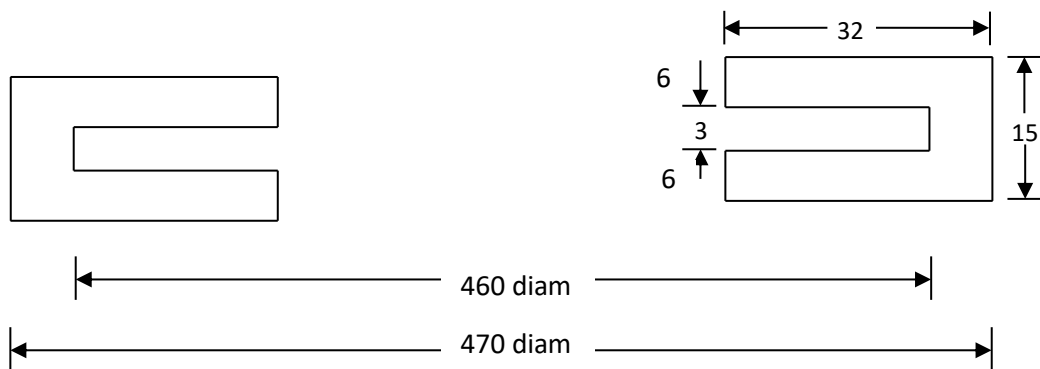
Extrusion Profiles



# MANWAY SEALS

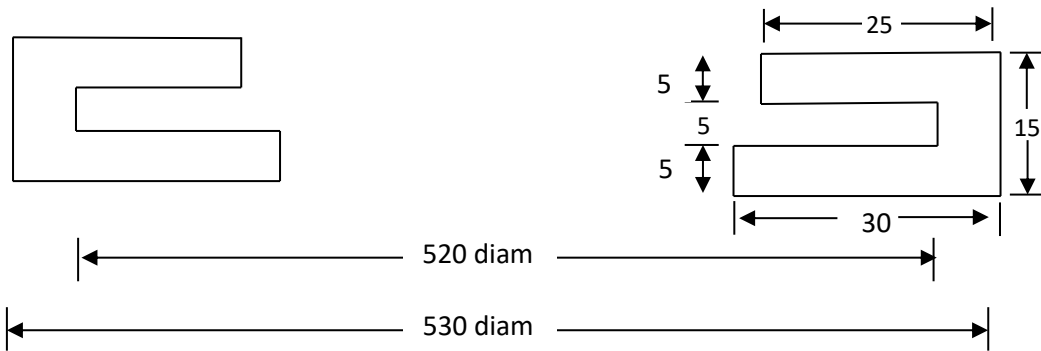
## Z176 SERIES

PART NUMBER	MATERIAL	HARDNESS	COLOUR	TEMP RANGE
Z176	EPDM	50A	WHITE	-40°C to +120°C
Z176-1	SILICONE	50A	WHITE	-50°C to +200°C
Z176-1E	EPDM	60A	BLACK	-40°C to +120°C
Z176-1G	SILICONE	50A	GREY	-50°C to +200°C
Z176-1N	NBR	60A	BLACK	-35°C to +110°C
Z176-1T	SILICONE	50A	TRANSLUCENT	-50°C to +200°C



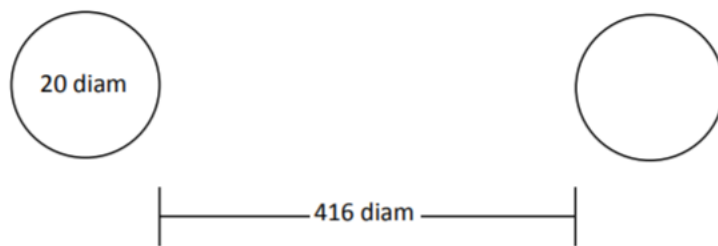
# Z180 SERIES

PART NUMBER	MATERIAL	HARDNESS	COLOUR	TEMP RANGE
Z180	EPDM	60A	BLACK	-40°C to +120°C
Z180-1	EPDM	60A	WHITE	-40°C to +120°C
Z180-2	NITRILE	60A	BLACK	-35°C to +110°C
Z180-3	SILICONE	50A	WHITE	-50°C to +200°C



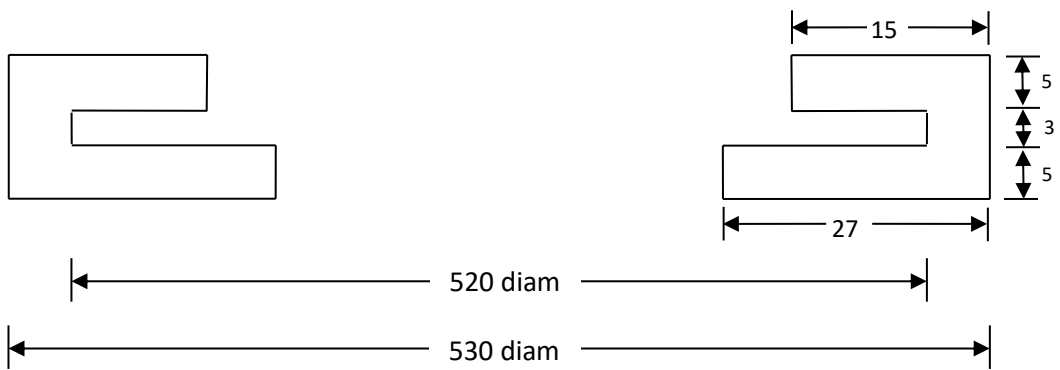
# Z184 SERIES

PART NUMBER	MATERIAL	HARDNESS	COLOUR	TEMP RANGE
Z184	NR	60A	WHITE	-30°C to +90°C



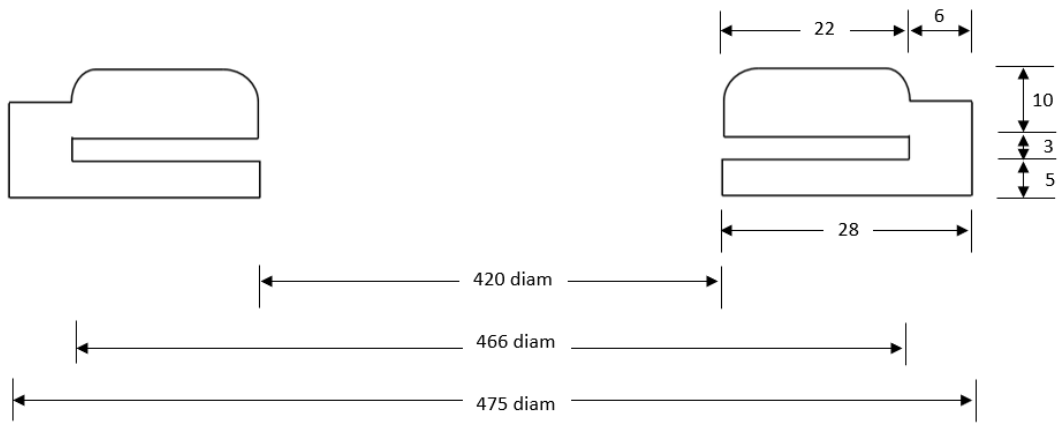
# Z185 SERIES

PART NUMBER	MATERIAL	HARDNESS	COLOUR	TEMP RANGE
Z185	SILICONE	50A	GREY	-50°C to +200°C



# Z186 SERIES

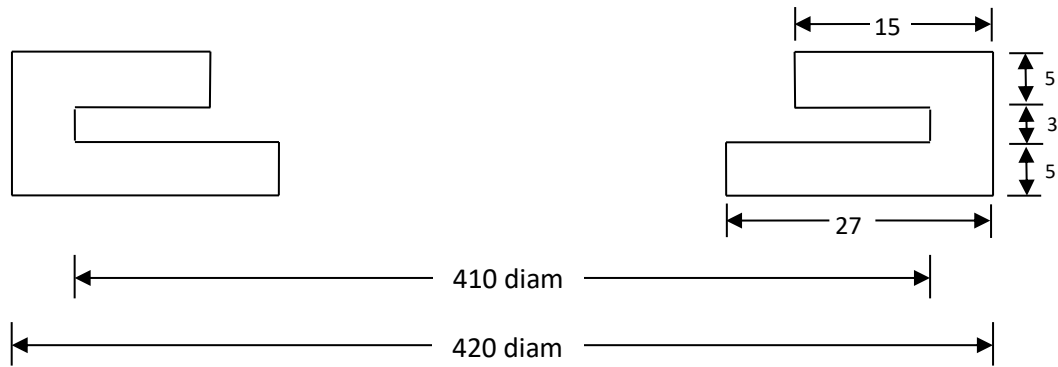
PART NUMBER	MATERIAL	HARDNESS	COLOUR	TEMP RANGE
Z186	NITRILE	60A	BLACK	-35°C to +110°C
Z186-S	SILICONE	50A	GREY	-50°C to +200°C
Z186-V	VITON	70A	RED	-20°C to +230°C





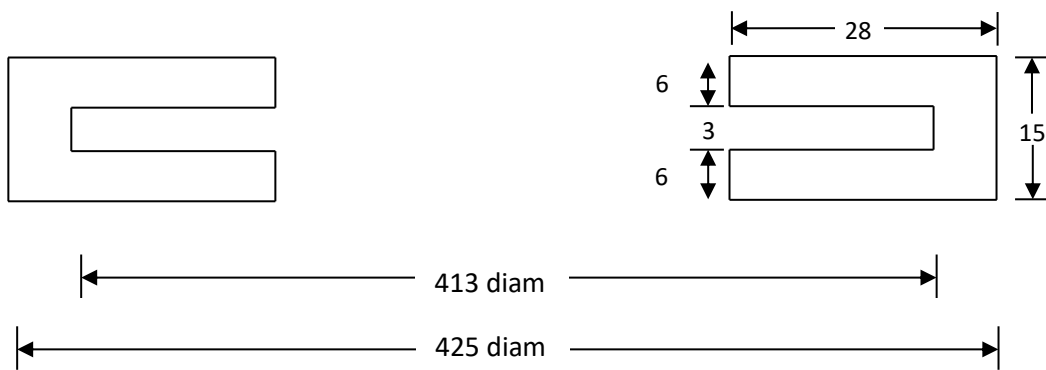
# Z188 SERIES

PART NUMBER	MATERIAL	HARDNESS	COLOUR	TEMP RANGE
Z188	SILICONE	50	GREY	-50°C to +200°C
Z188E	EPDM	50A	WHITE	-40°C to +120°C



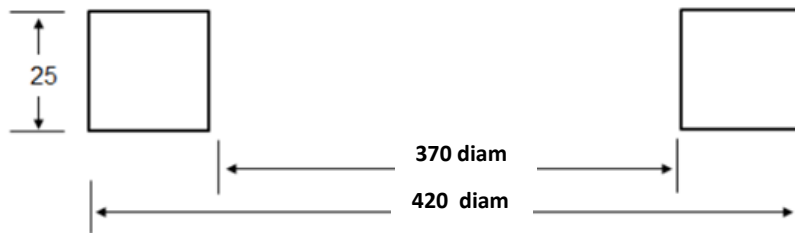
# Z189 SERIES

PART NUMBER	MATERIAL	HARDNESS	COLOUR	TEMP RANGE
Z189-1	SILICONE	50A	WHITE	-50°C to +200°C



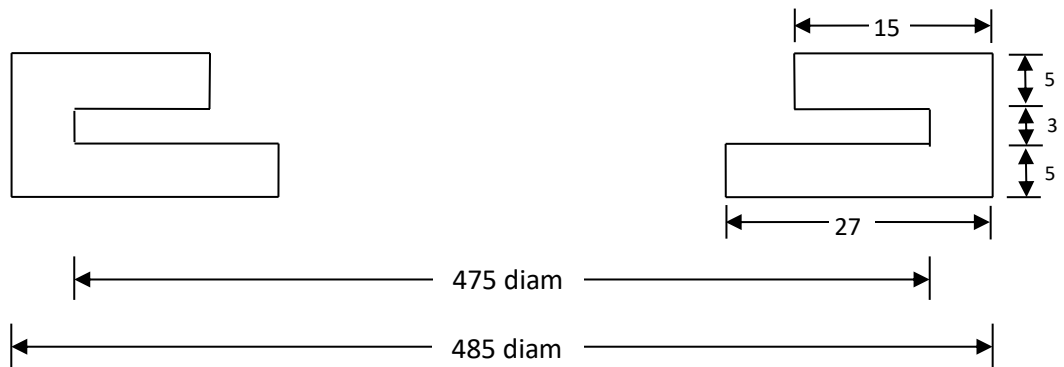
# Z194 SERIES

PART NUMBER	MATERIAL	HARDNESS	COLOUR	TEMP RANGE
Z194	SILICONE	40A	WHITE	-50°C to +200°C
Z195	EPDM	60A	BLACK	-40°C to +120°C



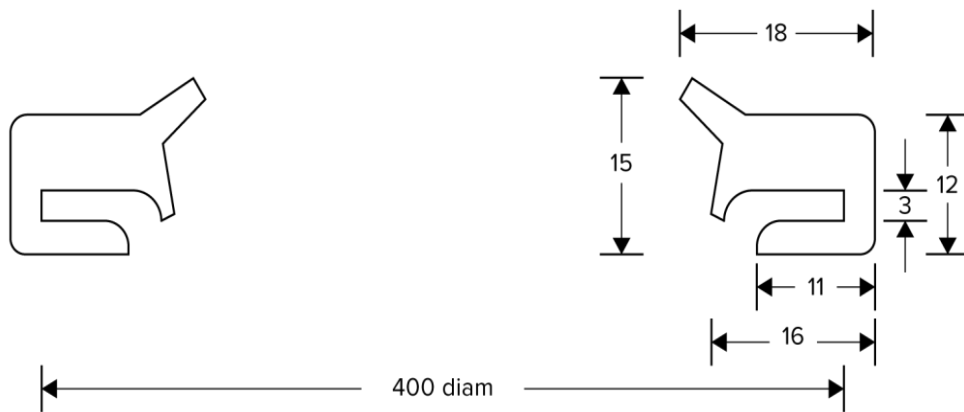
# Z206 SERIES

PART NUMBER	MATERIAL	HARDNESS	COLOUR	TEMP RANGE
Z206	SILICONE	50A	GREY	-50°C to +200°C
Z206B	SILICONE	50A	BLUE	-50°C to +200°C
Z206BE	EPDM	60A	BLACK	-40°C to +120°C
Z206NBR	NITRILE	60A	BLACK	-35°C to +110°C
Z206R	SILICONE	50A	RED	-50°C to +200°C
Z206WE	EPDM	60A	WHITE	-40°C to +120°C
Z206V	VITON	75A	BLACK	-30°C to +200°C



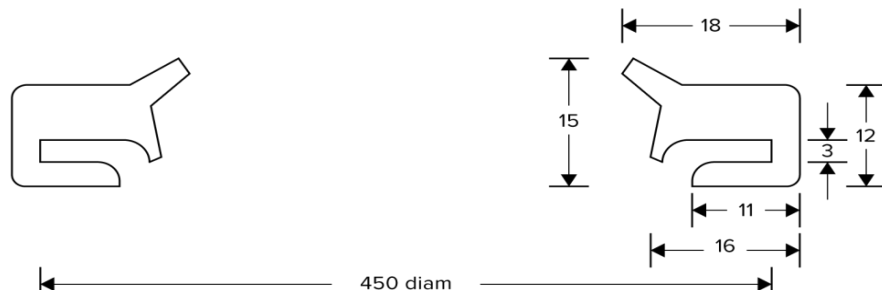
# Z208 SERIES

PART NUMBER	MATERIAL	HARDNESS	COLOUR	TEMP RANGE
Z208	SILICONE	50A	WHITE	-50°C to +200°C



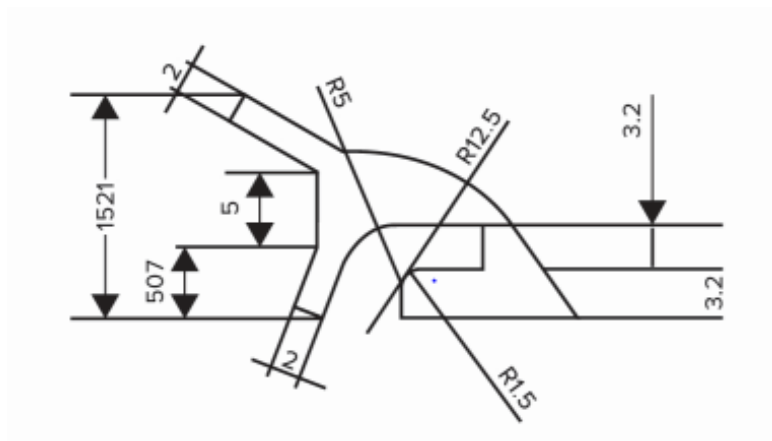
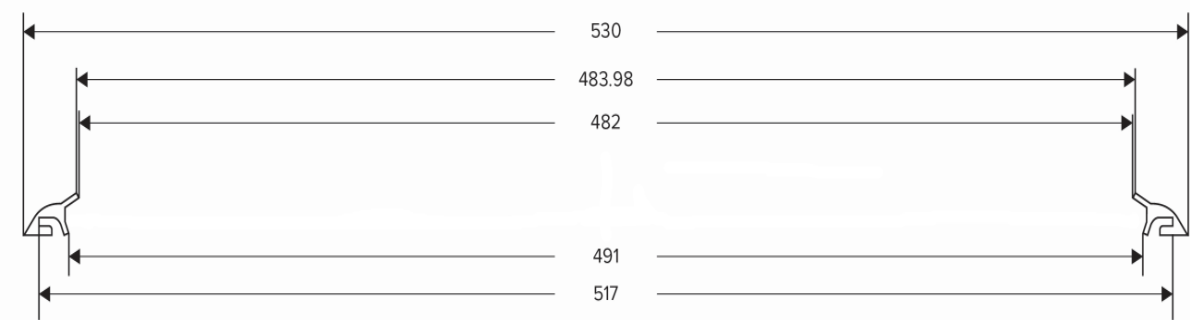
# Z209 SERIES

PART NUMBER	MATERIAL	HARDNESS	COLOUR	TEMP RANGE
Z209	SILICONE	50A	WHITE	-50°C to +200°C



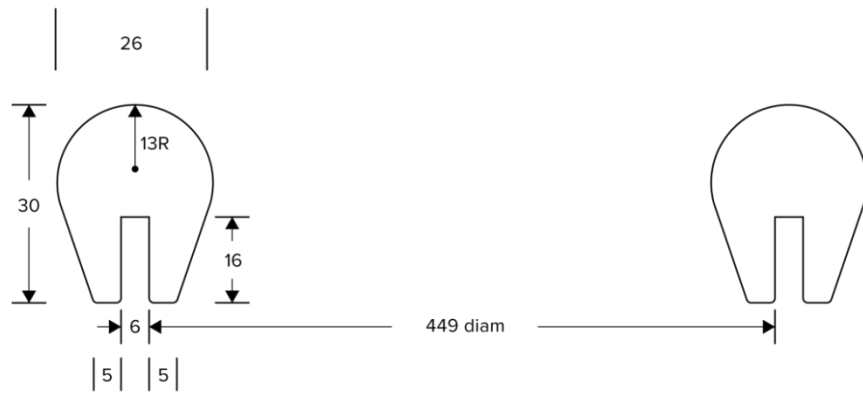
# Z210 SERIES

PART NUMBER	MATERIAL	HARDNESS	COLOUR	TEMP RANGE
Z210	SILICONE	60A	WHITE	-50°C to +200°C



# Z213 SERIES

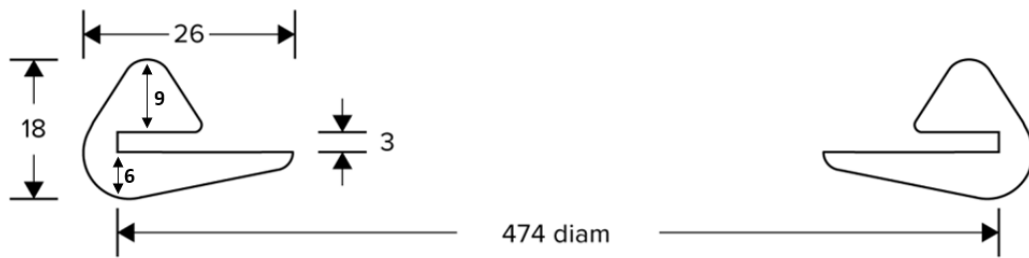
PART NUMBER	MATERIAL	HARDNESS	COLOUR	TEMP RANGE
Z213	SILICONE	50A	WHITE	-50°C to +200°C
Z213-1	SILICONE	75A	BLACK	-50°C to +200°C
Z213-NAT	NATURAL	60A	WHITE	-40°C to +80°C





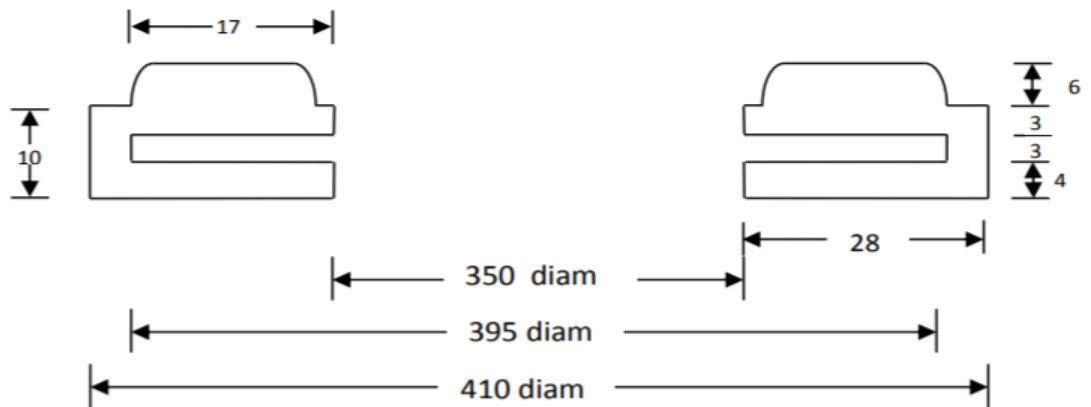
# Z220 SERIES

PART NUMBER	MATERIAL	HARDNESS	COLOUR	TEMP RANGE
Z220	SILICONE	50A	WHITE	-50°C to +200°C



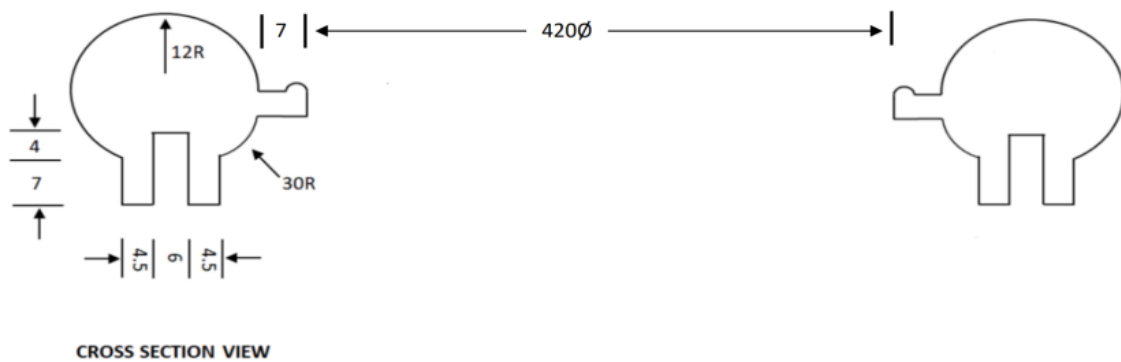
# Z221 SERIES

PART NUMBER	MATERIAL	HARDNESS	COLOUR	TEMP RANGE
Z221	NBR	60A	GREY	-35°C to +110°C



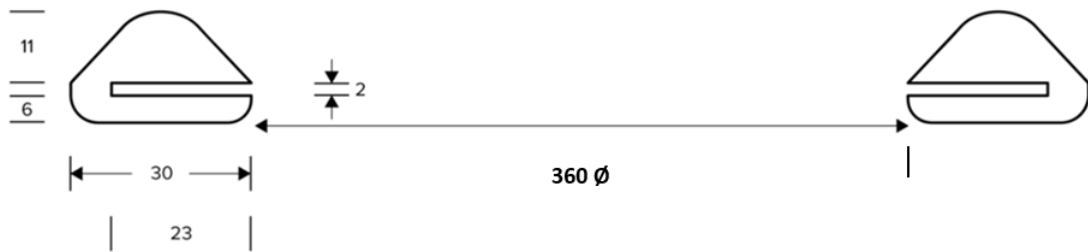
# Z222 SERIES

PART NUMBER	MATERIAL	HARDNESS	COLOUR	TEMP RANGE
Z222	EPDM	60A	BLACK	-40°C to +120°C
ZZL00019	SILICONE	50A	WHITE	-50°C to +200°C



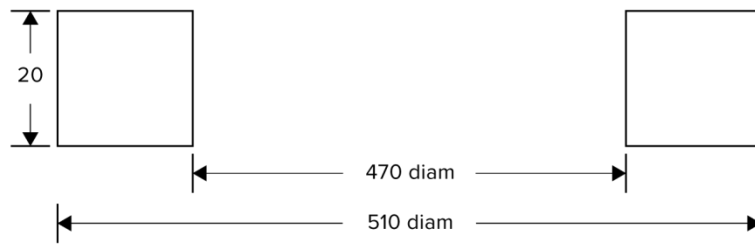
## Z223 SERIES

PART NUMBER	MATERIAL	HARDNESS	COLOUR	TEMP RANGE
Z223	SILICONE	40A	TRANSLUCENT	-50°C to +200°C



# Z226 SERIES

PART NUMBER	MATERIAL	HARDNESS	COLOUR	TEMP RANGE
Z226	SILICONE	40A	BLUE	-50°C to +200°C



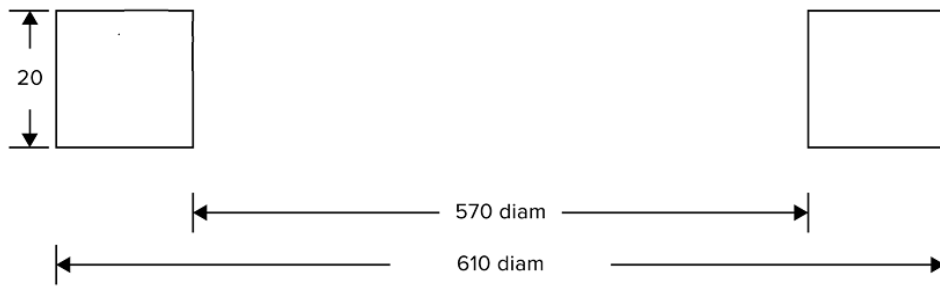
# Z227M SERIES

PART NUMBER	MATERIAL	HARDNESS	COLOUR	TEMP RANGE
Z227M	SILICONE	50A	BLUE	-50°C to +200°C



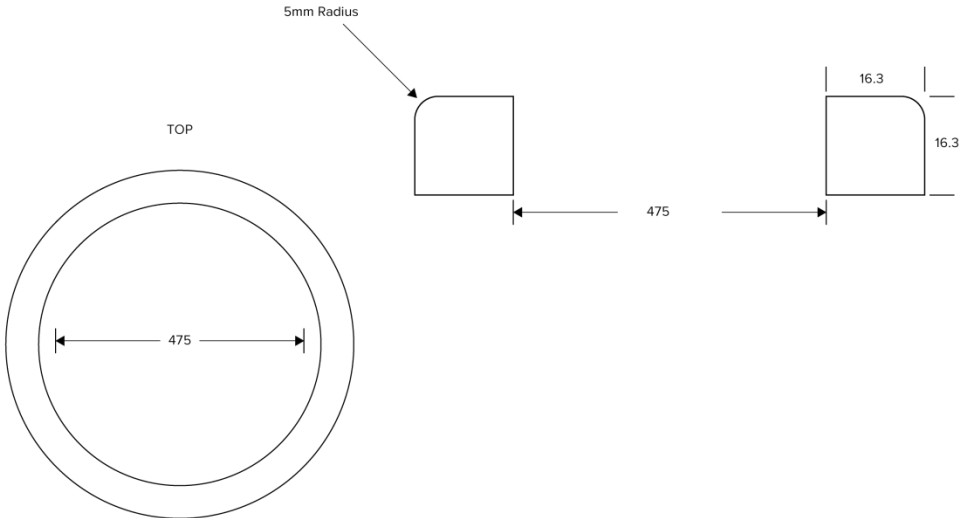
# Z228 SERIES

PART NUMBER	MATERIAL	HARDNESS	COLOUR	TEMP RANGE
Z228	SILICONE	40A	BLUE	-50°C to +200°C



# Z229REV SERIES

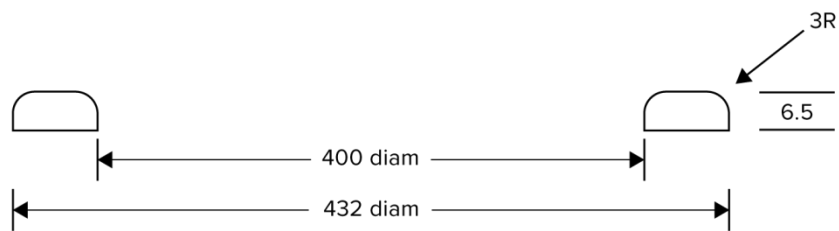
PART NUMBER	MATERIAL	HARDNESS	COLOUR	TEMP RANGE
Z229REV	NR	50A	BLACK	-30°C to +90°C





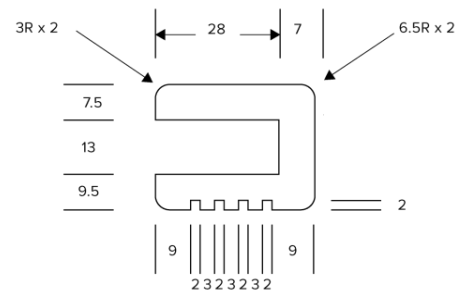
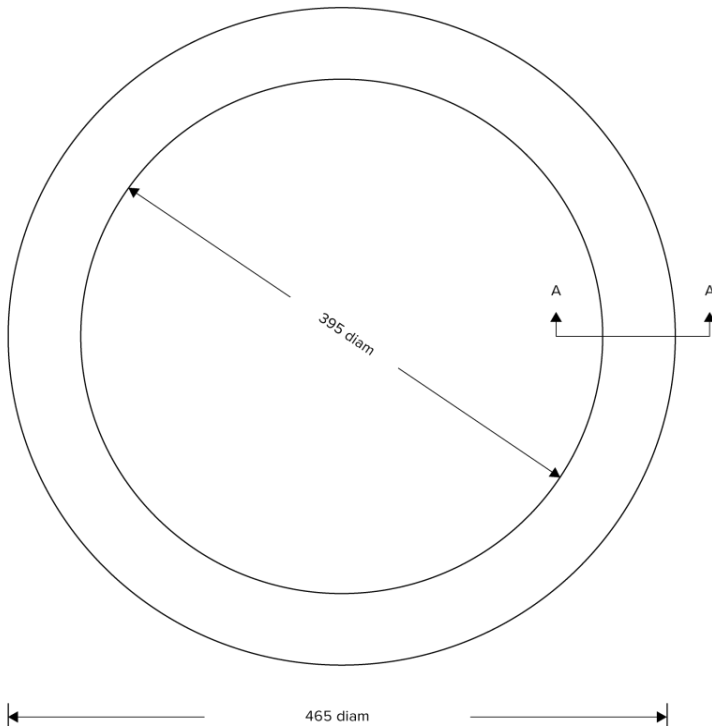
# Z230 SERIES

PART NUMBER	MATERIAL	HARDNESS	COLOUR	TEMP RANGE
Z230	NBR	70A	BLACK	-35°C to +110°C



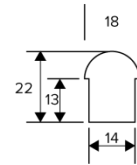
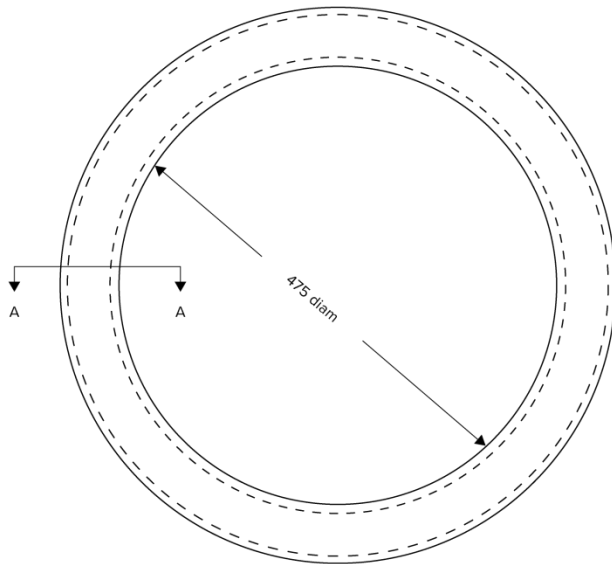
# Z231 SERIES

PART NUMBER	MATERIAL	HARDNESS	COLOUR	TEMP RANGE
Z231	SILICONE	50A	WHITE	-50°C to +200°C



# Z232 SERIES

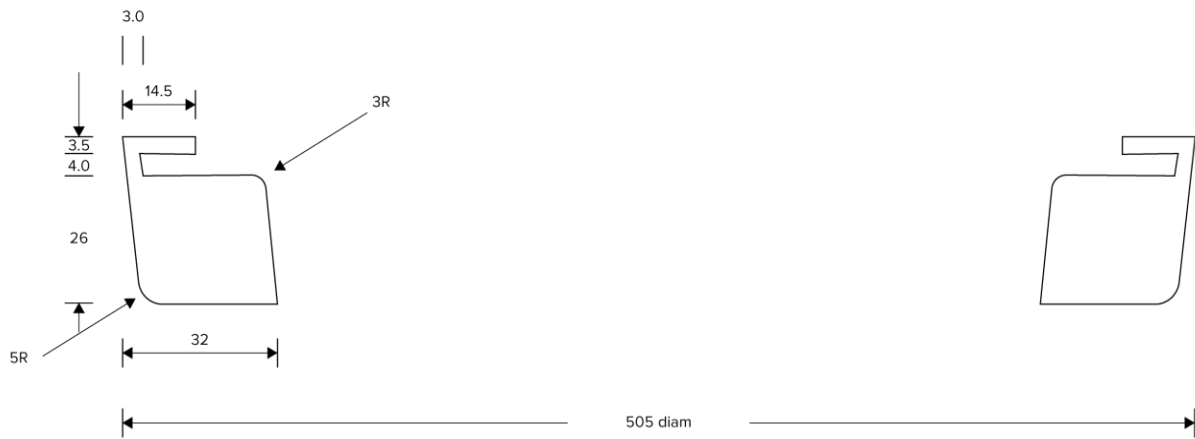
PART NUMBER	MATERIAL	HARDNESS	COLOUR	TEMP RANGE
Z232	SILICONE	40A	TRANS	-50°C to +200°C



SECTION VIEW 'A - A'  
SCALE: 1 : 1

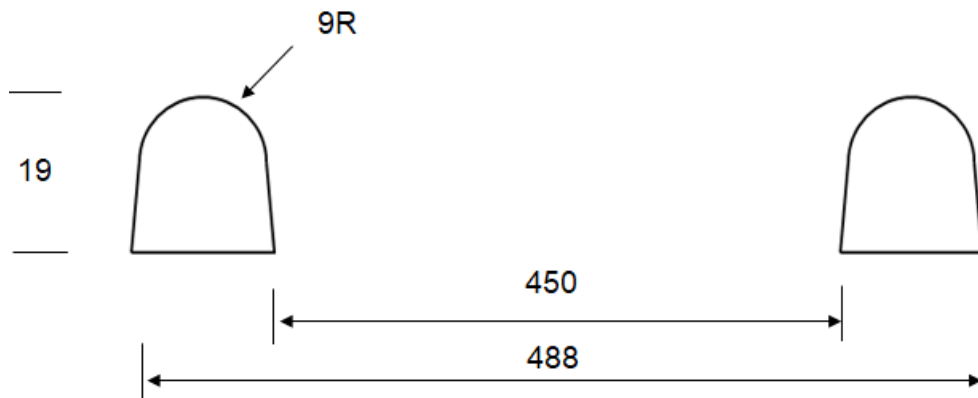
# Z234 SERIES

PART NUMBER	MATERIAL	HARDNESS	COLOUR	TEMP RANGE
Z234	SILICONE	50A	GREY	-50°C to +200°C



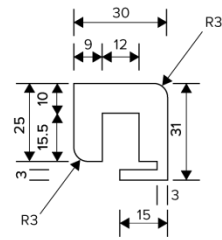
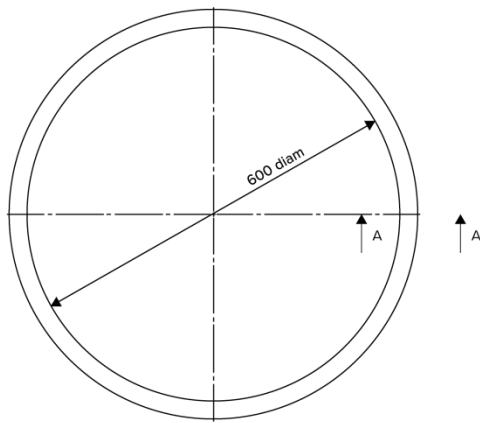
## Z236 SERIES

PART NUMBER	MATERIAL	HARDNESS	COLOUR	TEMP RANGE
Z236	SILICONE	60	WHITE	-50°C to +200°C

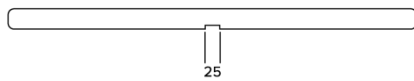


# Z238 SERIES

PART NUMBER	MATERIAL	HARDNESS	COLOUR	TEMP RANGE
Z238	EPDM	50A	GREY	-40°C to +120°C



SECTION VIEW A - A  
SCALE: 1 : 1



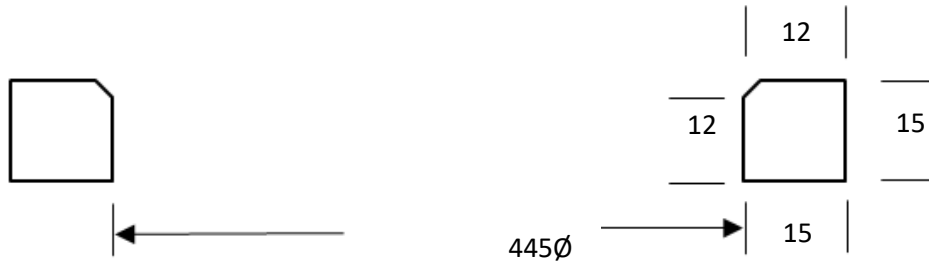
## Z239 SERIES

PART NUMBER	MATERIAL	HARDNESS	COLOUR	TEMP RANGE
Z239	SILICONE	40A	GREY	-50°C to +200°C
Z239-N	NBR	40A	BLACK	-35°C to +110°C



# Z245 SERIES

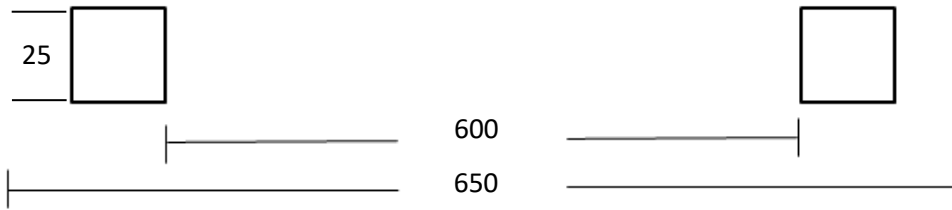
PART NUMBER	MATERIAL	HARDNESS	COLOUR	TEMP RANGE
Z245	SILICONE	50	BLUE	-50°C to +200°C





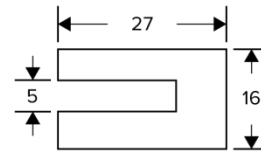
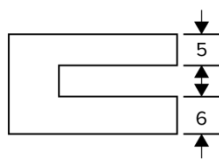
## Z246 SERIES

PART NUMBER	MATERIAL	HARDNESS	COLOUR	TEMP RANGE
Z246	SILICONE	40	WHITE	-50°C to +200°C



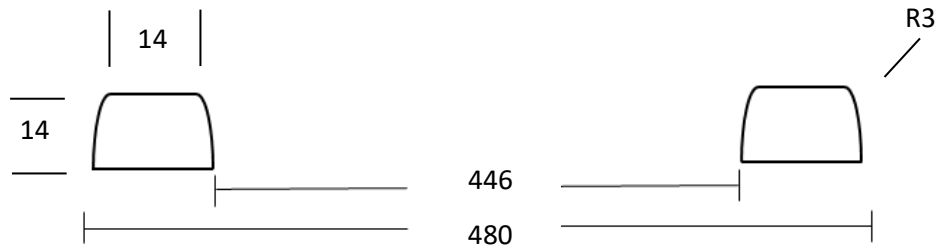
# Z248 SERIES

PART NUMBER	MATERIAL	HARDNESS	COLOUR	TEMP RANGE
Z248	EPDM	70A	GREY	-25°C to +90°C



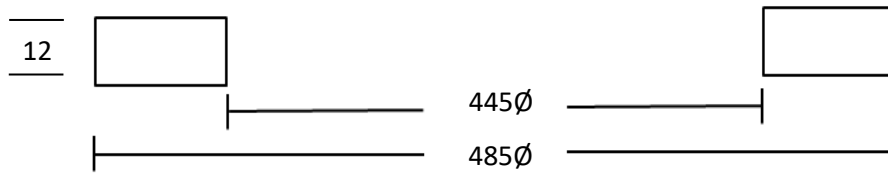
# Z249 SERIES

PART NUMBER	MATERIAL	HARDNESS	COLOUR	TEMP RANGE
Z249	SILICONE	60	WHITE	-50°C to +200°C



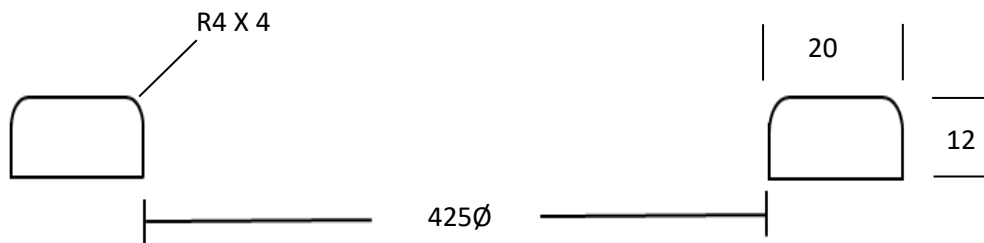
## Z250 SERIES

PART NUMBER	MATERIAL	HARDNESS	COLOUR	TEMP RANGE
Z250	SILICONE	60	WHITE	-50°C to +200°C



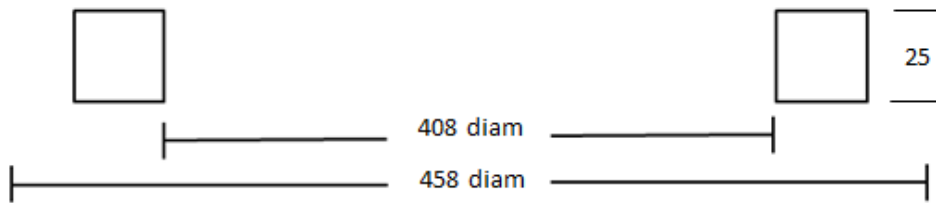
## Z259 SERIES

PART NUMBER	MATERIAL	HARDNESS	COLOUR	TEMP RANGE
Z259	SILICONE	60	WHITE	-50°C to +200°C



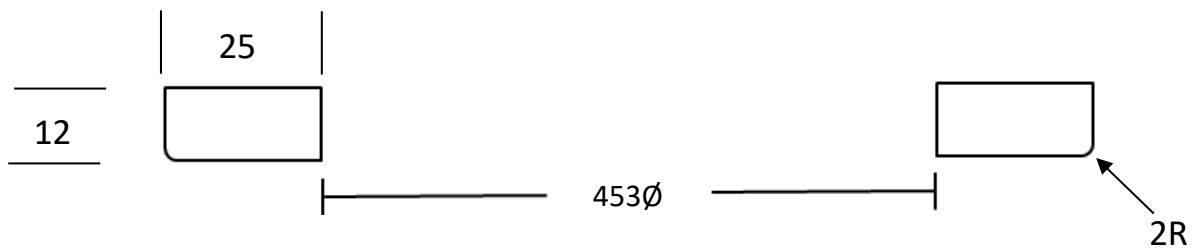
## Z264 SERIES

PART NUMBER	MATERIAL	HARDNESS	COLOUR	TEMP RANGE
Z264	SILICONE	55	WHITE	-50°C to +200°C



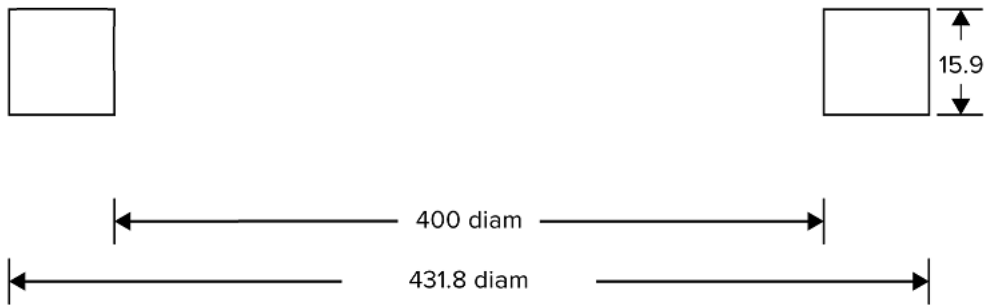
# Z270 SERIES

PART NUMBER	MATERIAL	HARDNESS	COLOUR	TEMP RANGE
Z270	SILICONE	35A	WHITE	-50°C to +200°C
Z271	NBR	35 – 40	BLACK	-35°C to +110°C



# ZT400 SERIES

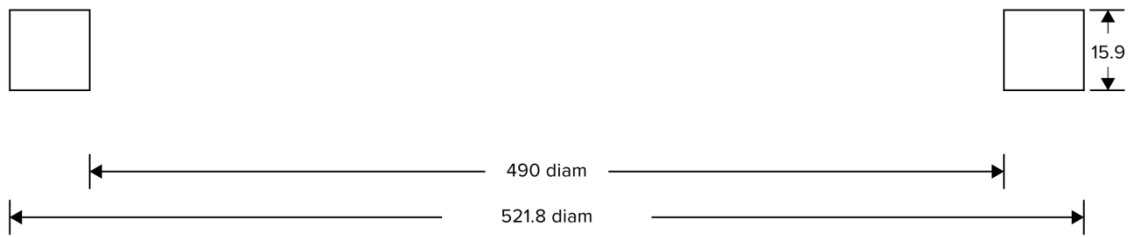
PART NUMBER	MATERIAL	HARDNESS	COLOUR	TEMP RANGE
ZT013	NBR	60A	BLACK	-35°C to +110°C
ZT014	VITON	70A	RED	-20°C to +230°C





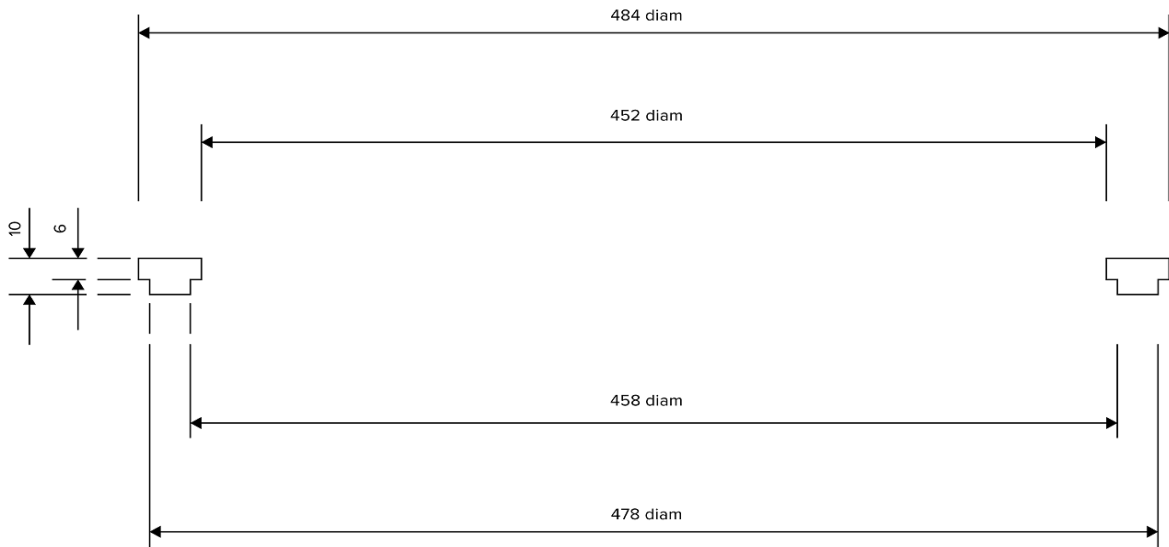
# ZT490 SERIES

PART NUMBER	MATERIAL	HARDNESS	COLOUR	TEMP RANGE
ZT015N	NBR	60A	BLACK	-35°C to +110°C
ZT015V	VITON	70A	RED	-20°C to +230°C



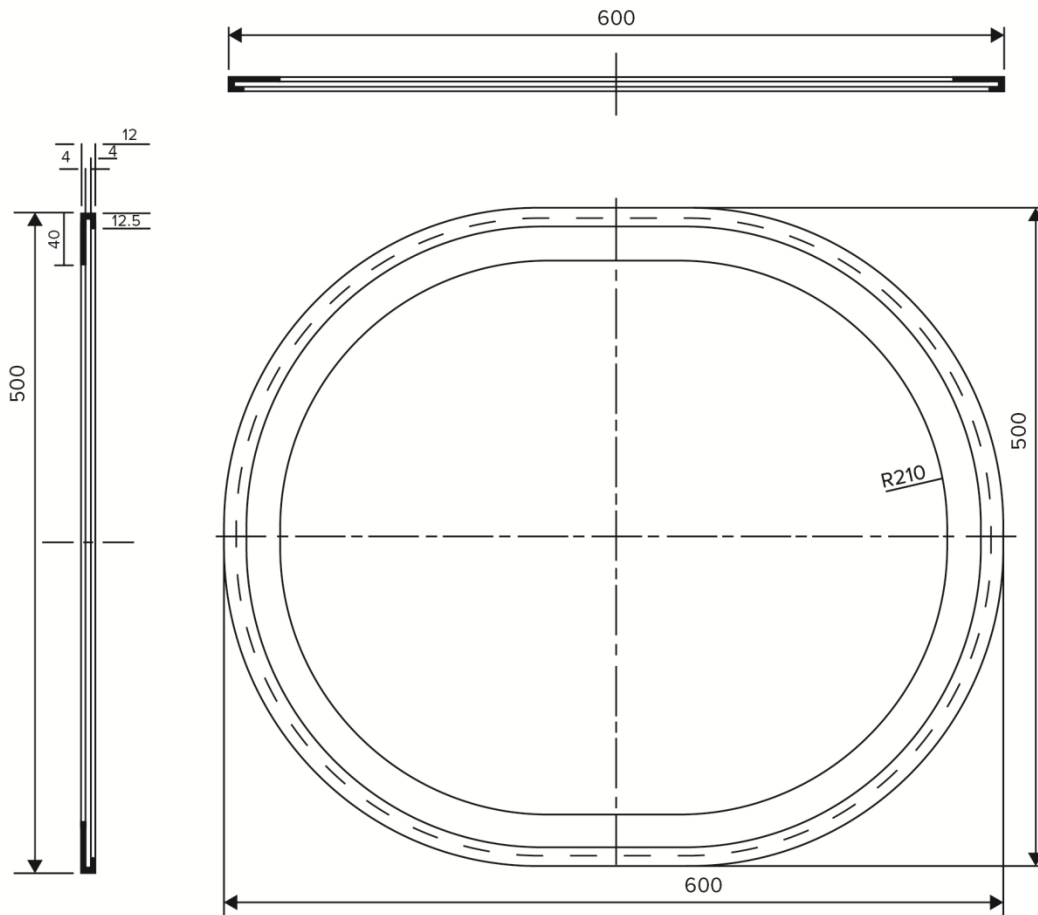
# Z277 SERIES

PART NUMBER	MATERIAL	HARDNESS	COLOUR	TEMP RANGE
Z277	SILICONE	60A	WHITE	-50°C to +200°C
Z277-1	EPDM	70A	BLACK	-25°C to +90°C



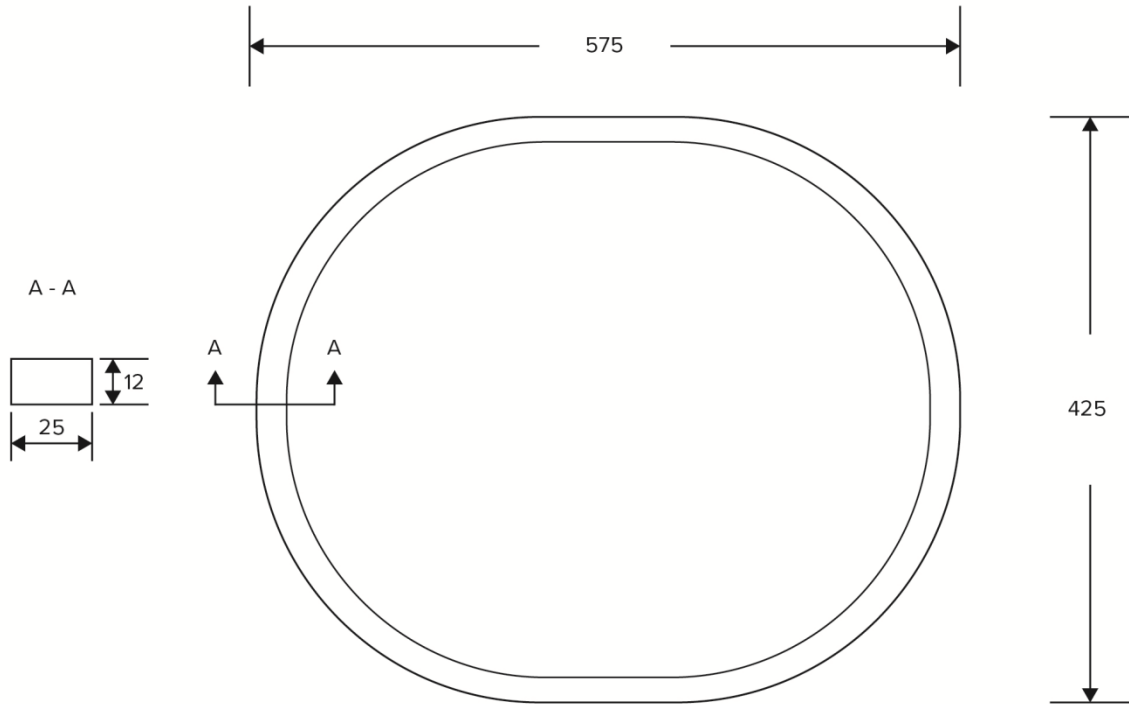
# Z278 SERIES

PART NUMBER	MATERIAL	HARDNESS	COLOUR	TEMP RANGE
Z278	SILICONE	60A	TRANS	-50°C to +200°C



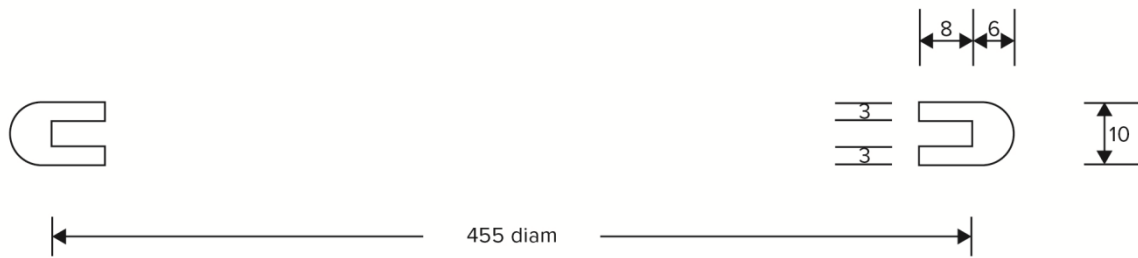
# Z279 SERIES

PART NUMBER	MATERIAL	HARDNESS	COLOUR	TEMP RANGE
Z279	SILICONE	40A	BLUE	-50°C to +200°C



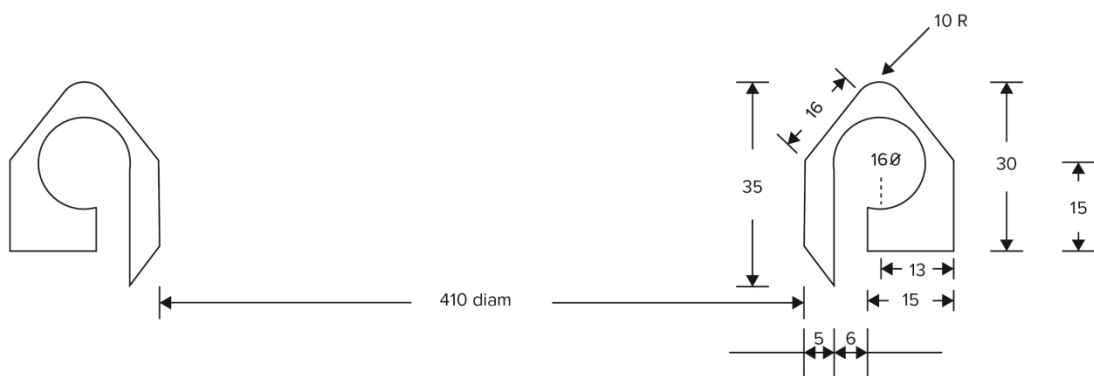
# Z280-1 SERIES

PART NUMBER	MATERIAL	HARDNESS	COLOUR	TEMP RANGE
Z280	NBR	70A	BLACK	-35°C to +110°C
Z280-1	SILICONE	60A	WHITE	-50°C to +200°C
Z280-2	NBR	40A	BLACK	-35°C to +110°C



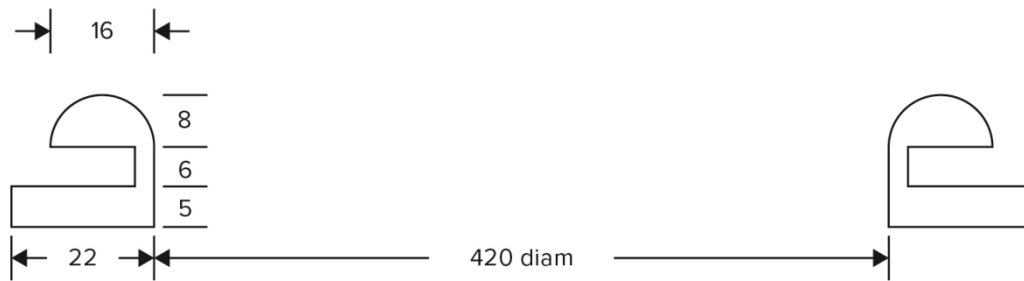
# Z281 SERIES

PART NUMBER	MATERIAL	HARDNESS	COLOUR	TEMP RANGE
Z281	SILICONE	45A	WHITE	-50°C to +200°C



## Z282 SERIES

PART NUMBER	MATERIAL	HARDNESS	COLOUR	TEMP RANGE
Z282	SILICONE	60A	WHITE	-50°C to +200°C



## Z283 SERIES

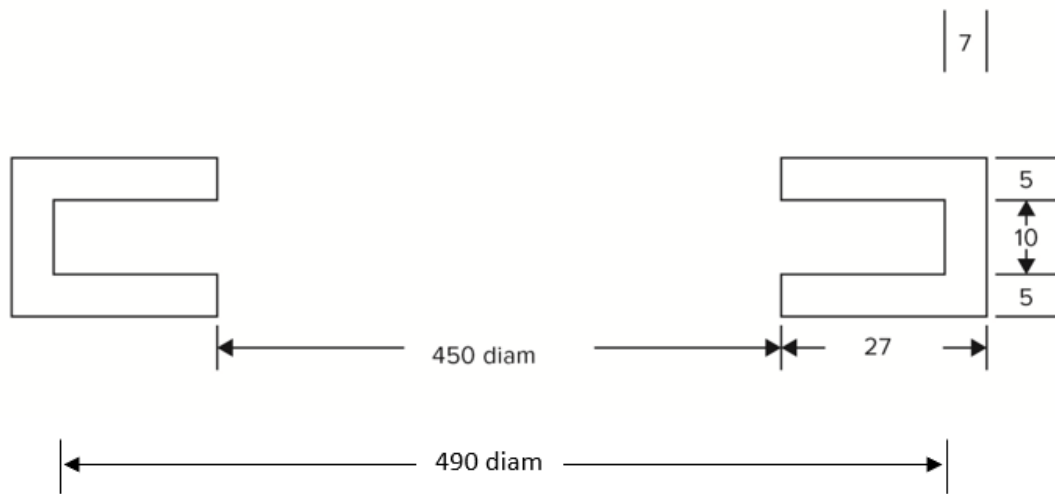
PART NUMBER	MATERIAL	HARDNESS	COLOUR	TEMP RANGE
Z283	NBR	40A	BLACK	-35°C to +110°C
Z283-S	SILICONE	60A	WHITE	-50°C to +200°C
Z283-V	VITON	75A	BLACK	-20° to +230°C





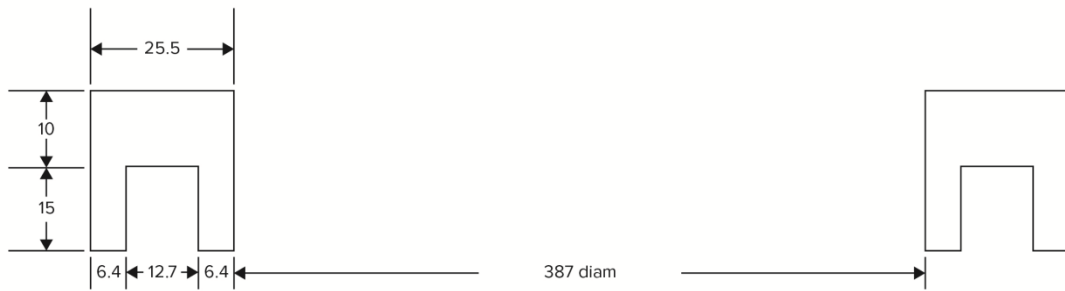
# Z284 SERIES

PART NUMBER	MATERIAL	HARDNESS	COLOUR	TEMP RANGE
Z284	NBR	60A	BLACK	-35°C to +110°C



# Z285 SERIES

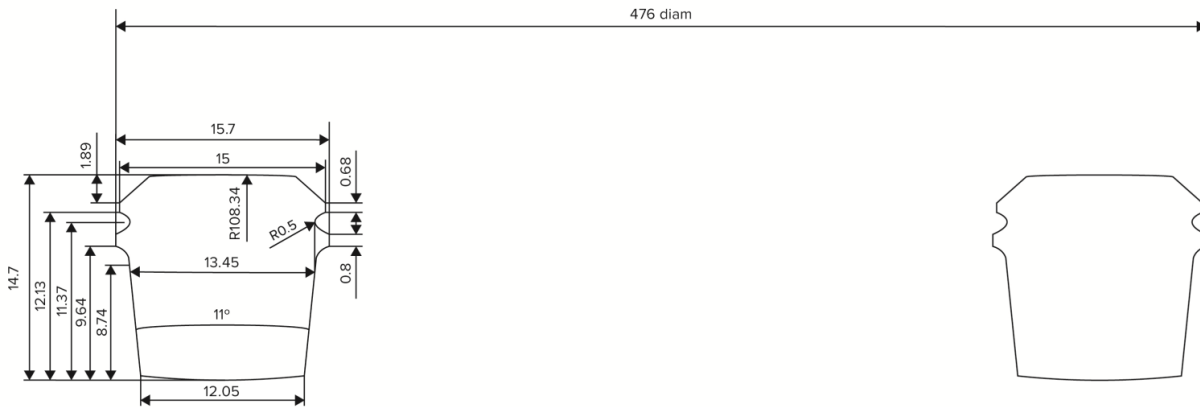
PART NUMBER	MATERIAL	HARDNESS	COLOUR	TEMP RANGE
Z285	SILICONE	40A	TRANS	-50°C to +200°C



# Z286 SERIES

## HATCH SEAL #3200-14

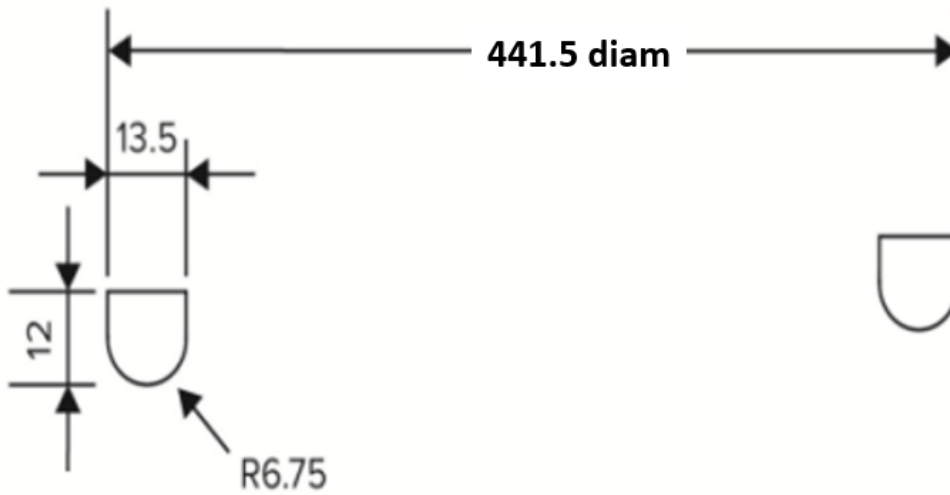
PART NUMBER	MATERIAL	HARDNESS	COLOUR	TEMP RANGE
Z286	NBR	60A	BLACK	-35° to +110°C



# Z287 SERIES

## HATCH SEAL #3114 (C027)

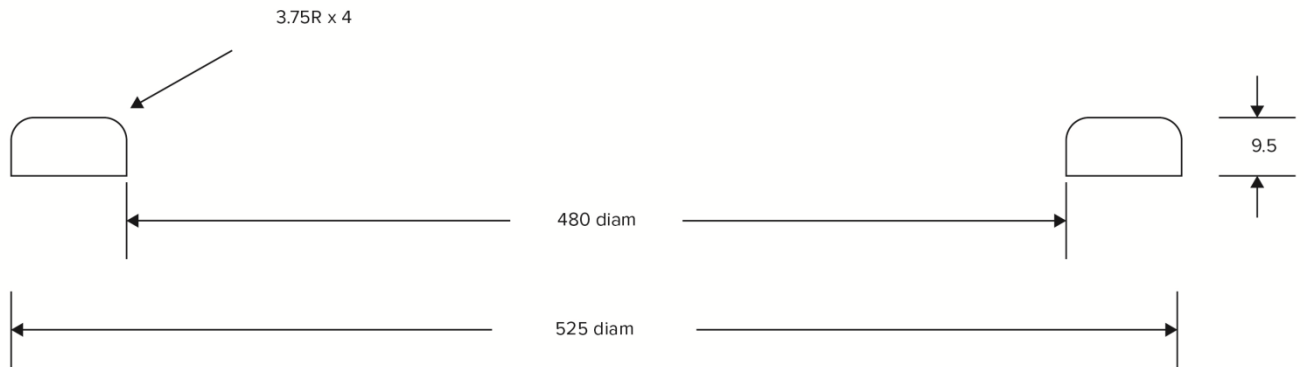
PART NUMBER	MATERIAL	HARDNESS	COLOUR	TEMP RANGE
Z287	NBR	60A	BLACK	-35° to +110°C



# Z288 SERIES

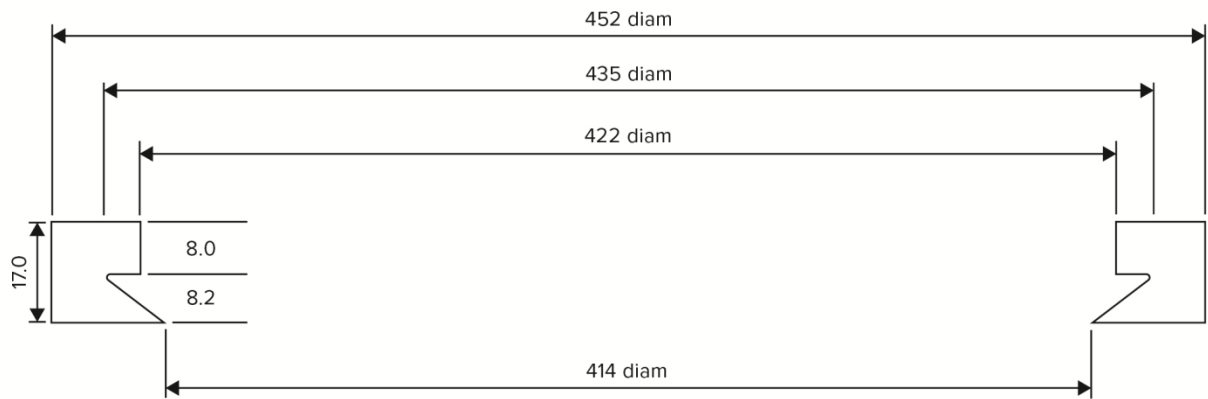
## HATCH SEAL #3523

PART NUMBER	MATERIAL	HARDNESS	COLOUR	TEMP RANGE
Z288	NBR	60A	BLACK	-35° to +110°C
Z288-S	SILICONE	60A	WHITE	-50° to +200°C



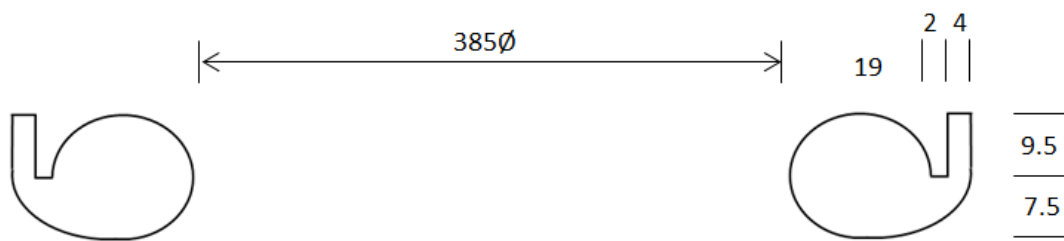
# Z289 SERIES

PART NUMBER	MATERIAL	HARDNESS	COLOUR	TEMP RANGE
Z289	SILICONE	70A	BLACK	-50° to +200°C



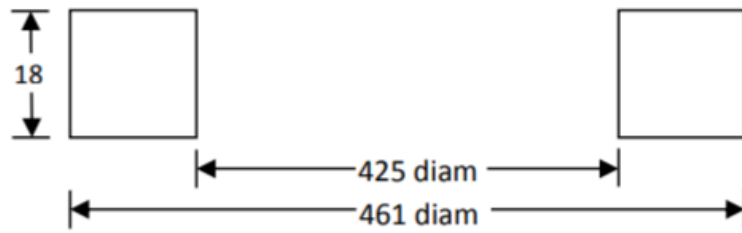
# Z291 SERIES

PART NUMBER	MATERIAL	HARDNESS	COLOUR	TEMP RANGE
Z291	SILICONE	50-60	TRANSLUCENT	-50°C to +200°C



# Z292 SERIES

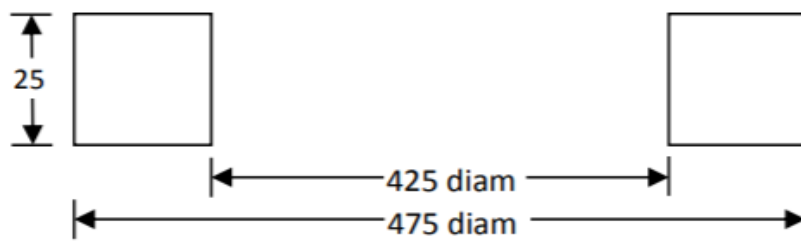
PART NUMBER	MATERIAL	HARDNESS	COLOUR	TEMP RANGE
Z292	SILICONE	40	WHITE	-50°C to +200°C





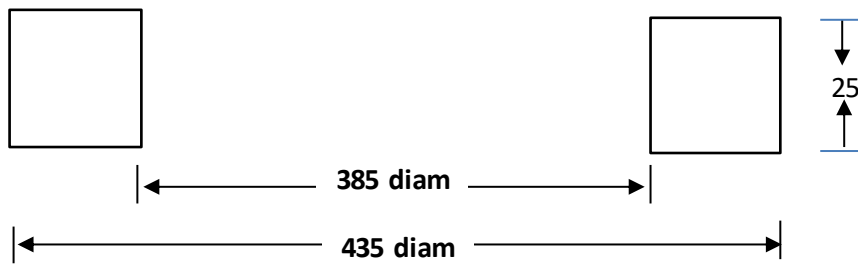
# Z293 SERIES

PART NUMBER	MATERIAL	HARDNESS	COLOUR	TEMP RANGE
Z293	SILICONE	40A	WHITE	-50°C to +200°C



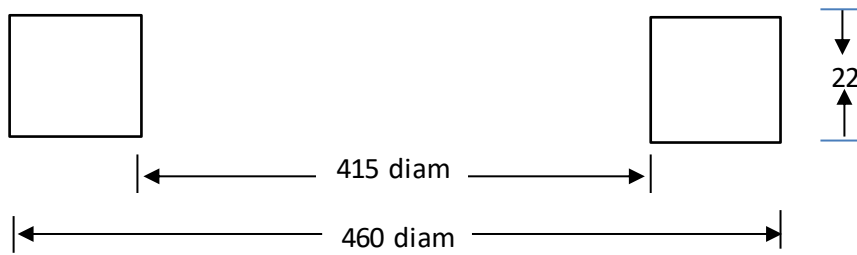
# Z294 SERIES

PART NUMBER	MATERIAL	HARDNESS	COLOUR	TEMP RANGE
Z294	SILICONE	40A	WHITE	-50°C to +200°C



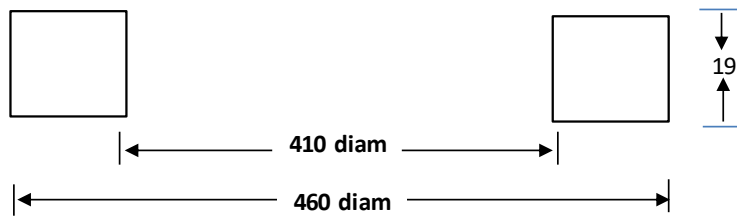
# Z295 SERIES

PART NUMBER	MATERIAL	HARDNESS	COLOUR	TEMP RANGE
Z295	SILICONE	40A	WHITE	-50°C to +200°C



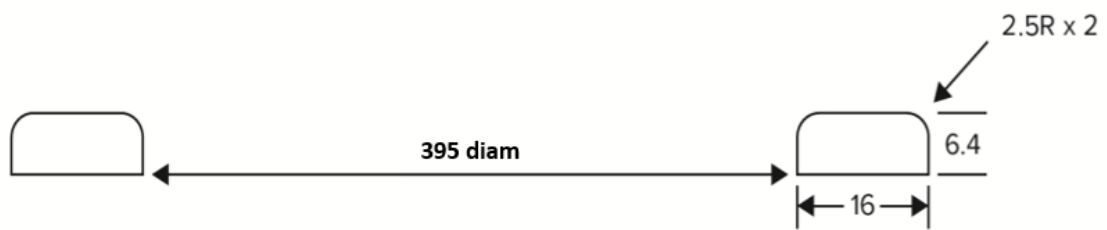
# Z296 SERIES

PART NUMBER	MATERIAL	HARDNESS	COLOUR	TEMP RANGE
Z296	SILICONE	40A	WHITE	-50°C to +200°C



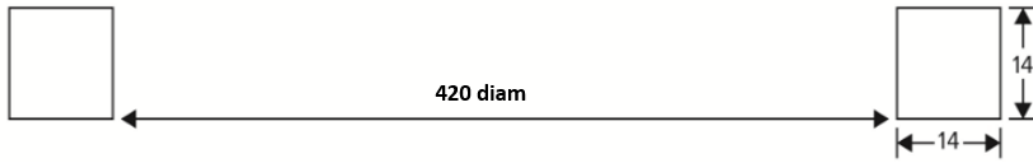
## Z297 SERIES

PART NUMBER	MATERIAL	HARDNESS	COLOUR	TEMP RANGE
Z297	VITON	65A	RED	-20° to +230°C



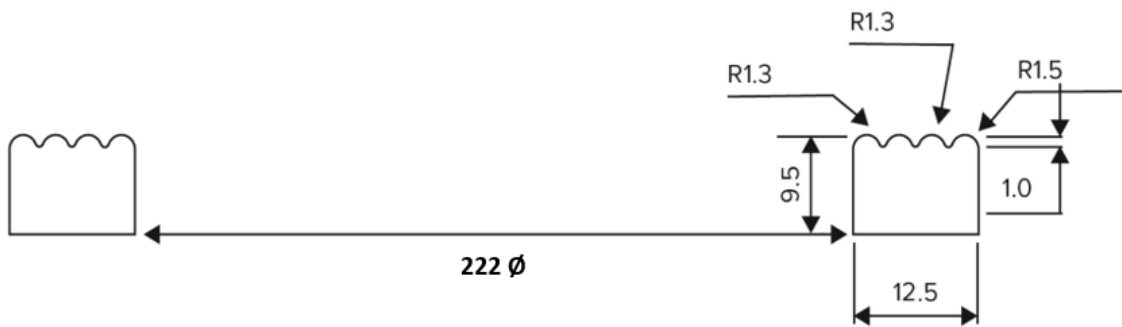
## Z298 SERIES

PART NUMBER	MATERIAL	HARDNESS	COLOUR	TEMP RANGE
Z298	NBR	65A	BLACK	-35° to +110°C



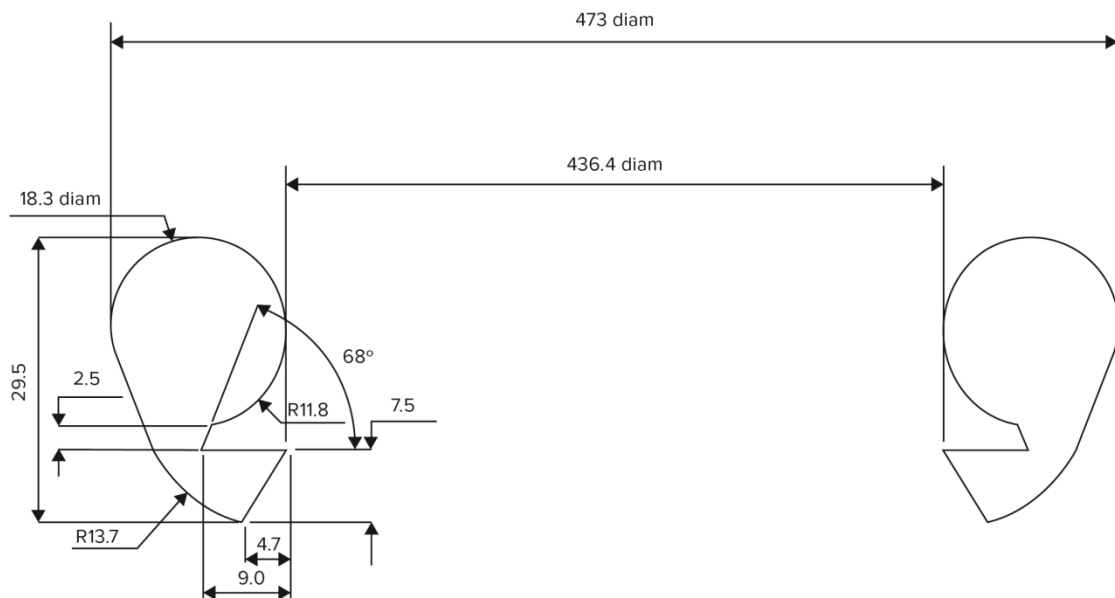
## Z299 SERIES

PART NUMBER	MATERIAL	HARDNESS	COLOUR	TEMP RANGE
Z299	NBR	60A	BLACK	-35° to +110°C



# Z300 SERIES

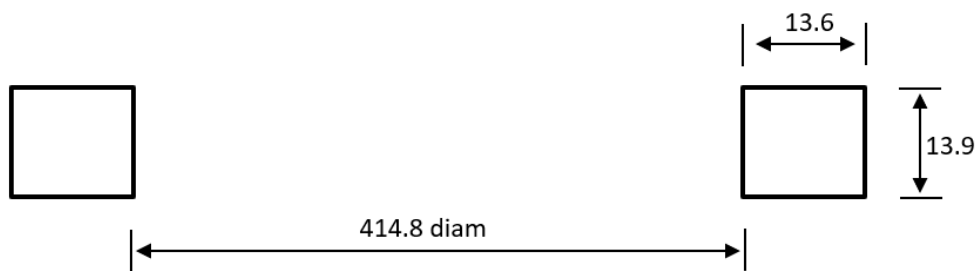
PART NUMBER	MATERIAL	HARDNESS	COLOUR	TEMP RANGE
Z300	NBR	85A	BLACK	-35° to +110°C
Z300S	SILICONE	50-60	TRANS	-50°C to +200°C





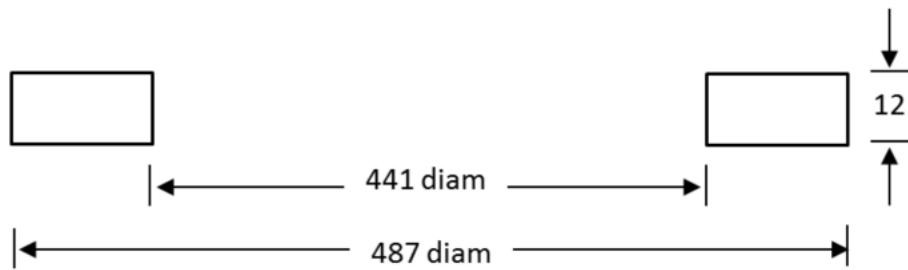
# Z301 SERIES

PART NUMBER	MATERIAL	HARDNESS	COLOUR	TEMP RANGE
Z301	NBR	60A	BLACK	-35°C to +110°C



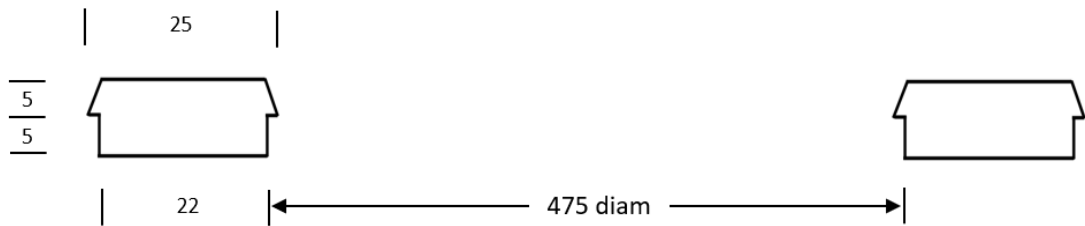
# Z302 SERIES

PART NUMBER	MATERIAL	HARDNESS	COLOUR	TEMP RANGE
Z302	NBR	70A	BLACK	-35°C to +110°C



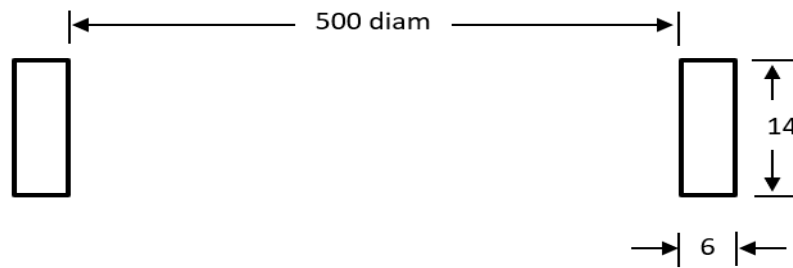
# Z303 SERIES

PART NUMBER	MATERIAL	HARDNESS	COLOUR	TEMP RANGE
Z303	NATURAL	60A	WHITE	55° C to +82° C



# Z305 SERIES

PART NUMBER	MATERIAL	HARDNESS	COLOUR	TEMP RANGE
Z305	NEOP	60A	BLACK	-20°C and +110°C



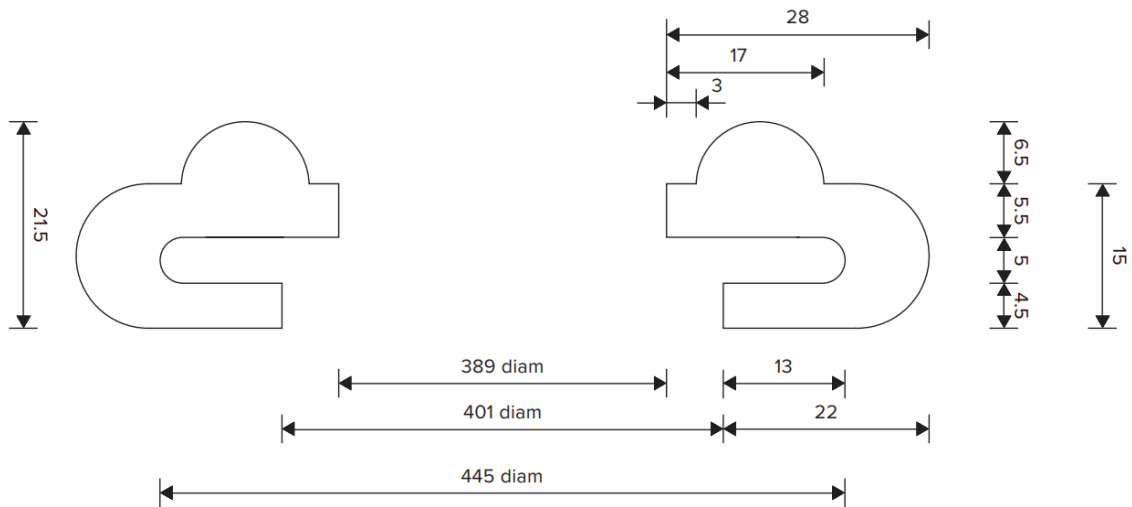
# Z306 SERIES

PART NUMBER	MATERIAL	HARDNESS	COLOUR	TEMP RANGE
Z306	EPDM	70A	BLACK	-40°C to +120°C



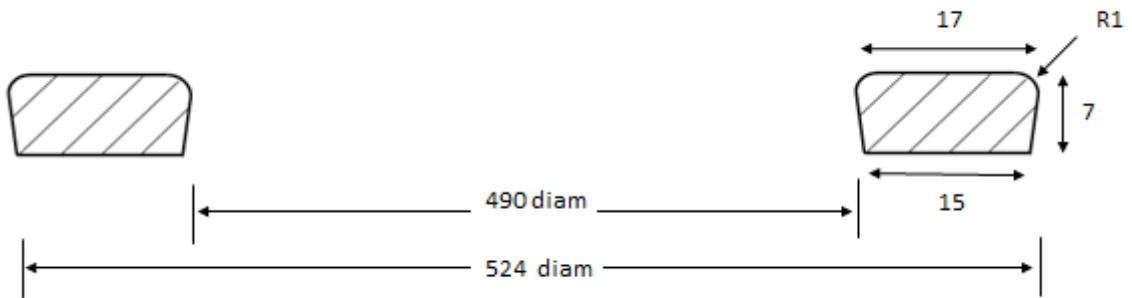
# ZZC01031 SERIES

PART NUMBER	MATERIAL	HARDNESS	COLOUR	TEMP RANGE
ZZC01031	SILICONE	55A	WHITE	-50°C to +200°C



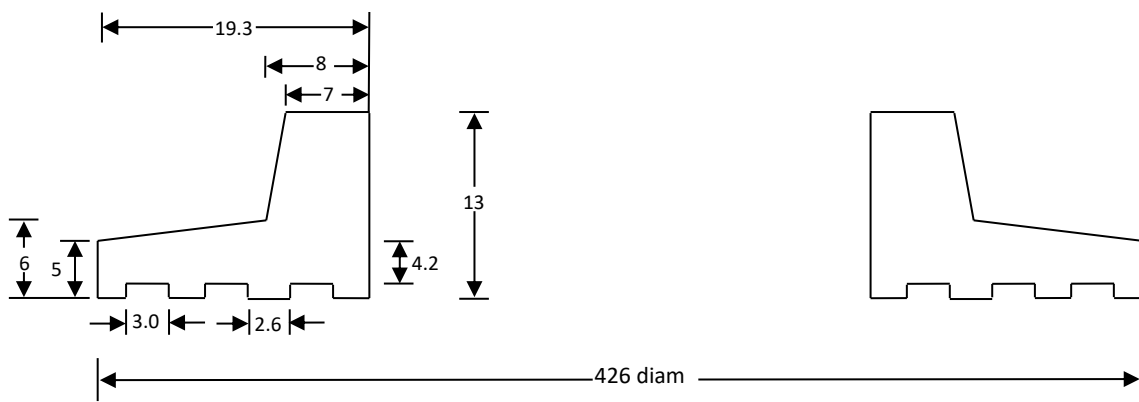
# ZZT00493 SERIES

PART NUMBER	MATERIAL	HARDNESS	COLOUR	TEMP RANGE
ZZT00493	SILICONE	55A	WHITE	-50°C to +200°C



# Z320 SERIES

PART NUMBER	MATERIAL	HARDNESS	COLOUR	TEMP RANGE
Z320	ACRYLONITRILE	45A	BLACK	-20°C to +110°C

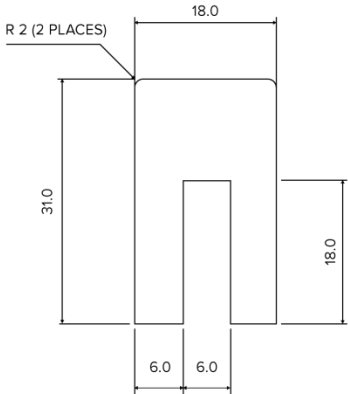




# EXTRUSIONS

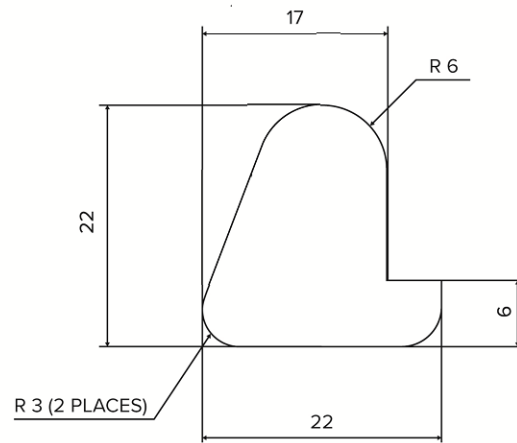
## Z177 SERIES

PART NUMBER	MATERIAL	HARDNESS	COLOUR	TEMP RANGE
Z177	SILICONE	55A	WHITE	-50°C to +200°C



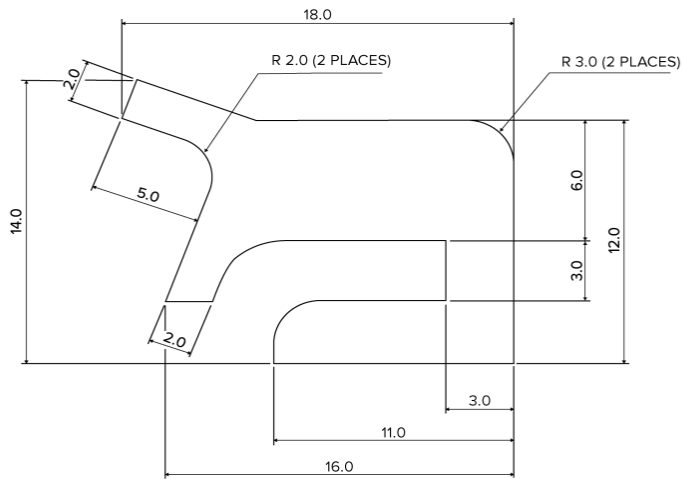
# Z177-1 SERIES

PART NUMBER	MATERIAL	HARDNESS	COLOUR	TEMP RANGE
Z177-1	SILICONE	50A	WHITE	-50°C to +200°C



# Z211 SERIES

PART NUMBER	MATERIAL	HARDNESS	COLOUR	TEMP RANGE
Z211	SILICONE	45A	WHITE	-50°C to +200°C



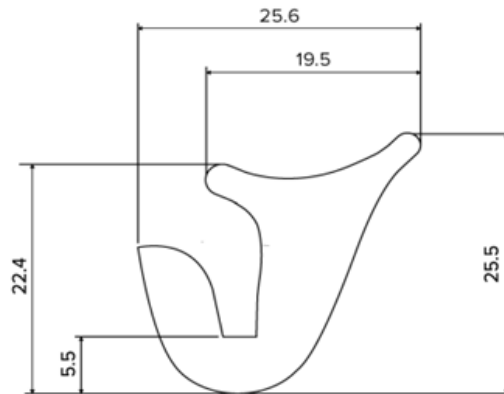
CROSS-SECTION AREA = 140.5mm<sup>2</sup>



Scale 1 : 1

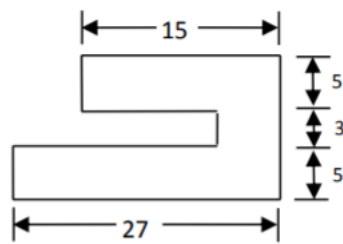
# Z212 SERIES

PART NUMBER	MATERIAL	HARDNESS	COLOUR	TEMP RANGE
Z212	SILICONE	45A	WHITE	-50°C to +200°C



# Z225 SERIES

PART NUMBER	MATERIAL	HARDNESS	COLOUR	TEMP RANGE
Z225	SILICONE	50A	GREY	-50°C to +200°C



# Z321 SERIES

PART NUMBER	MATERIAL	HARDNESS	COLOUR	TEMP RANGE
Z321	SILICONE	50A	GREY	-50°C to +200°C

