



# Matting

Moulded Ute & Van Mats  
Mats & trays  
Universal Rubber Mat  
Anti-Fatigue Matting  
Stud Flooring  
Heavy Duty Mats  
U.T.E Mats  
VIP Safety Mats  
Linking Mats  
Closed Cell Foam Matting  
Safety Mats  
Ergonomic Dome Mats  
Electrical Insulation Mats  
Fingertip Matting  
Industrial Scraper  
Safetylok  
PVC Noodle-Mat  
Ribbed Rubber Matting  
Equine Matting  
Caravan & Shower Matting  
Machinery Mat  
Soft Cubism Anti-Fatigue Mat  
Recycled Matting  
Footwear Wiper Mats

[www.completerubber.com.au](http://www.completerubber.com.au)





# MOULDED UTE & VAN MATS

The special rubber compound and mat design help prevent your cargo from sliding in any direction, insuring your payload stays in place. Para Moulded Ute mats not only protect your cargo but also help keep your Ute tray in top condition.







## Features:

- Made from durable fibr3e reinforced rubber
- UV Resistant
- Tear, crack & warp resistant
- Resistant to most chemicals and liquids
- Resistant to extreme temperatures
- Skid resistant
- Dimpled under bottom to help prevent water damage and rust
- Custom moulded to suit tray
- Made from natural and synthetic rubber
- Reduces noise

## Ideal for:

- Four Wheel Drives
- Utes
- Vans
- Tradespeople
- Farmers
- Council & Government dept
- Snow Resorts
- Contractors

Part no.	Width x Length (mm)
M14105	2420 x 1850
M14306	1310 x 1910
M14307	1460 x 1820
M41104	1500 x 2260
M41105	1500 x 2260
M41107	1560 x 1380
M41113	1500 x 1670
M41114	1520 x 2330
M41115	1520 x 1820
M41116	1520 x 1540
M41207	1444 x 830
M41208	1444 x 1410
M41305	1535 x 500
M41309	1520 x 1420
M41406	1495 x 1540
M41409	1475 x 1360
M41504	1465 x 1745
M41506	1465 x 1525
M41701	1613 x 2464
M41702	1613 x 1994
M41705	1613 x 1689

				Factory Fleetside Body			Steel/Aluminium Tray		
									
MAKE	MODEL	MODEL	YEAR RANGE	STANDARD CAB	EXTRA CAB	DUAL CAB	STANDARD CAB	EXTRA CAB	DUAL CAB
Toyota	Hilux		2000-05	*41104	*41105	*41113 4WD *41107			
Toyota	Hilux	692N	2006-ON	*41114	*41115	*41116	14105	14105	14105
Toyota	70 Series	79	2005-ON				14105		
Holden	Commodore	VE	2007-ON	14306					
Holden	Rodeo	RA	2003-ON		*41207	*41208	14105	14105	14105
Holden	Colorado		2008-ON		*412047	*41208			
Mitsubishi	Triton	MK	1998-05			*41406			
Mitsubishi	Triton	ML	2006-08			*41409	14105		
			2007-ON						
Mazda	BT50	BT50	2007-ON		*41504	*41506	14105		
Ford	Ranger		2007-ON	*41701	*41702	*41705	14105	14105	14105
Ford	Falcon	AU-BF	1999-ON	14307			14105		
Nissan	Narvara	D22M	1999-06			*41305	14105		
Nissan	Narvara	D40	2005-ON			*41309			
Nissan	Patrol	GU	2001-ON						

---

# MATS & TRAYS

---

## Foot Mats

Foot mats retain unwanted dirt within their tray like design for easy disposal. Mats are sold in pairs with header card and hanger

### Features:

- Raised edges eliminate dirt and mud falling from sides like conventional mats
- Easy removal for dirt disposal
- Non-slip underside eliminates mats sliding
- Made from highly durable natural rubber
- Fully washable
- Attractive appearance
- Fits most vehicles



DEAL FOR:  
Four Wheel Drive

Part No.	Size
M029	Front Mat Black
M030	Rear Mat Black

## Trunk Trays

Trunk Trays are high quality, durable rubber mats designed to maintain the cleanliness of a vehicle boot or cargo area and protect against cuts, stains and abrasions to the vehicle carpet.

### Features:

- Non-slip surface prevents items from sliding on rolling
- Heavy duty rubber construction is resistant to fuels, battery acid, paints and household chemicals
- Excellent for home us to protect floors and carpet
- Easily cleaned

Part no.	Size
M031	750mm x 500mm
M031-2	900mm x 600mm



---

# UNIVERSAL RUBBER MAT

---

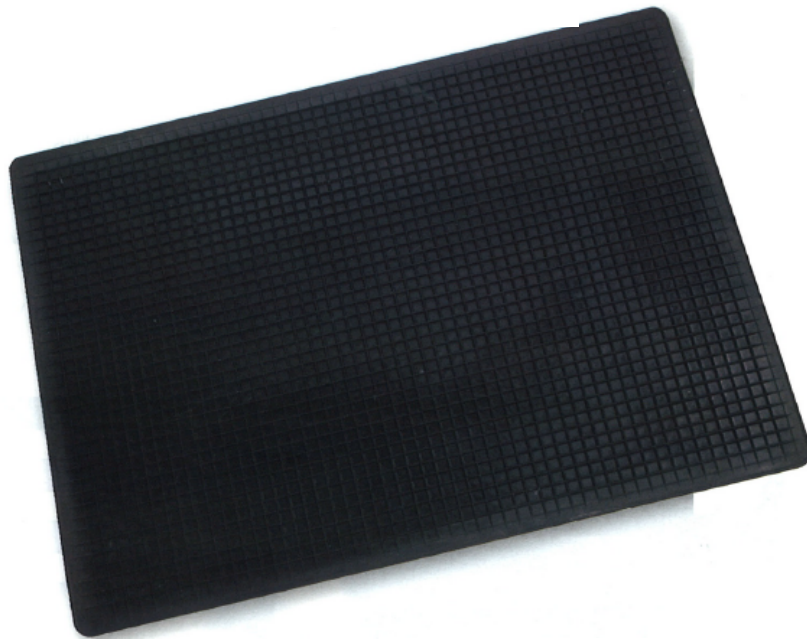
The Universal Rubber Mat is high quality, low cost mat manufactured from a blend of natural and synthetic rubbers. The availability of two sizes makes it ideal for a large range of industrial, domestic, marine and automotive uses.

**Ideal for:**

- Cars
- Trucks
- Domestic
- Industrial
- Marine

**Features:**

- Low cost
- High Quality Durable Rubber
- Universal Application



Part No	Size
M028	450mm x 600mm
M028-1	510mm x 710mm

# ANTI-FATIGUE MATS

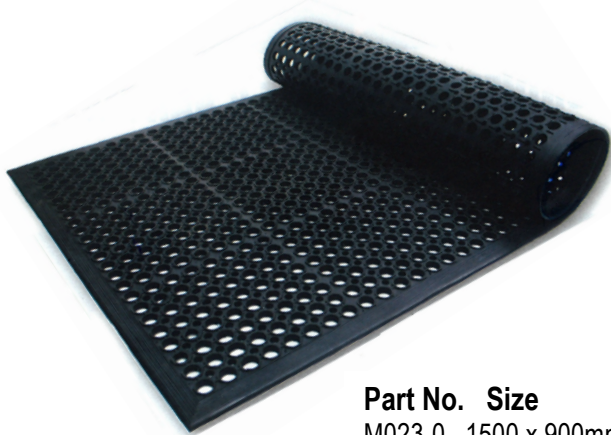
Where employees need the added comfort and safety for long periods of standing

**Benefits:**

- Instils safety consciousness
- Superb Anti Fatigue Support
- Enhances productivity and physical well being
- All edges bevelled with rounded corners
- Available with checker plate, studded or ribbed design to surface
- Available with or without safety yellow borders



**Part No: M001**



Part No.	Size
M023-0	1500 x 900mm
M023-1	3000 x 900mm

**Features:**

- Ergonomically designed for reduction of back, leg and ankle fatigue
- Promotes employee wellbeing
- Reduces the affect to legs and feet of prolonged exposure to cold, heat and vibration
- Helps reduce spinal compression
- Assists with increasing circulation
- Very user friendly and easy to clean
- Mats are manufactured from hard wearing natural rubber
- Excellent traction surface offers safer footing, even under wet conditions

**Ideal for:**

- Domestic, industrial, commercial, agriculture and hospitality

---

# STUD FLOORING

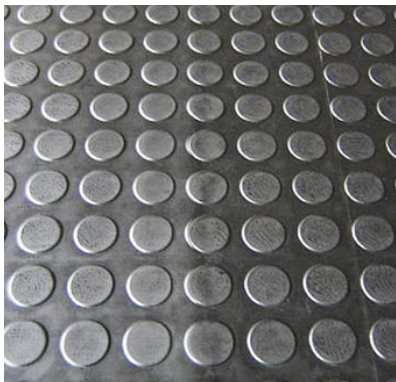
---

## *Small Stud*



<b>Part No:</b> M063
----------------------

## *Large Stud*





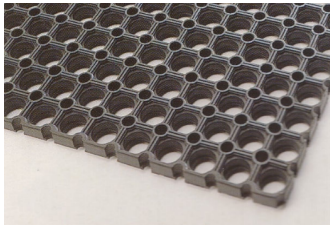
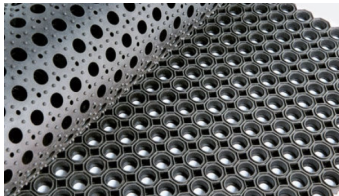
Part No	Description
M059	4.5MM X 1M X 10M (red only)
M061	3.0MM X 1.2M X 10M (black only)

## **Sharkskin Non-Slip Finish**

Part No	Part No
M025-3	3.5MM X 100MM X 10M
M025-2	3.5MM X 1200MM X 10M
M025-4	3.5MM X 1500MM X 10M
M025	4.5MM X 1000MM X 10M
M025-1	4.5MM X 1200MM X 10M
M025-15	4.5MM X 1500MM X 10M



# HEAVY DUTY MATS

N150		<p>Fully ramped with an anti-slip top Individual mats, centres and ends available for interlocking</p> <p><b>Part no:</b> M023-4 M023-4FR M023-5</p> <p><b>Size:</b> 10mm x 1m x 1.5m</p>
		<p>11.5kgs. Individual mats, centres and end available for interlocking in continuous roll length at 1m wide only.</p> <p><b>Part no:</b> M023 – Black</p> <p><b>Part No:</b> M021 – Black with yellow edges</p> <p><b>Size:</b> 10mm x 1m x 1.5m</p>
D150		<p>18kgs, no ramps (block sided)</p> <p><b>Part no: Size:</b></p> <p>M023-7            23mm x 80cm x 1.2m</p> <p>M023-8            23mm x 1m x 1.5m</p> <p>M023-9            23mm x 1m x 2m</p> <p>With Ramps</p> <p>M023-3            23mm x 1m x 1.5mm</p> <p>Black, or black with yellow edges</p>
K150		<p>21kg similar to D150 but with softer compound Block-sided</p> <p><b>Part no:</b> M065</p> <p><b>Size:</b> 23mm x 1m x 1.5m</p>

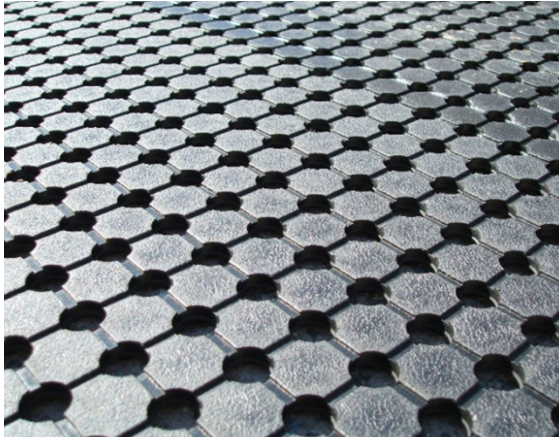
---

# MATTING

---

## *U.T.E. Mats*

---



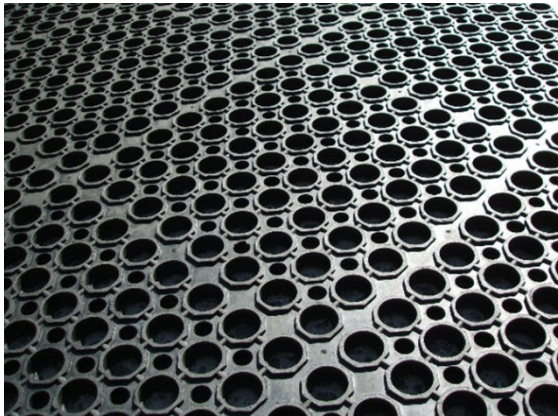
**Part No**  
M037  
M037-1

**Size**  
1.83m x 10m rolls  
0.91m x 10m rolls

---

## *VIP Safety Mats*

---



**Part No**  
M064

**Size**  
12mm x 91cm x 1052m

12.5kg Fully ramped  
Available in natural (black) or nitrile (black  
or terracotta)

---

# LINKING MATS

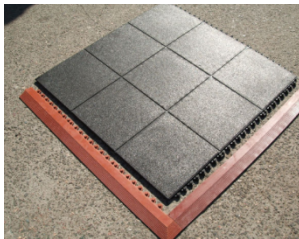
---

## *Link - Treadplate*



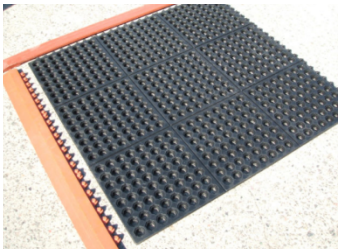
Available in black solid rubber with treadplate surface  
Clips on four sides  
Ramps not required  
**Part no:** M066  
**Size:** 15mm x 91cm x 91cm

## *Link - Solid*



Available in black solid rubber with non-skid surface  
Clips on four sides  
Ramps available to suit  
**Part no:** M067  
**Size:** 15mm x 91cm x 91cm

## *Link – Holes*

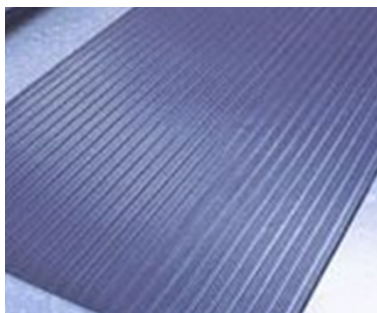


Available in black natural or red nitrile  
Clips on four sides  
Ramps available to suit  
**Part no:** M068  
**Size:** 15mm x 91cm x 91cm



# CLOSED CELL FOAM MATTING

## *Ribbed*



Grey, ribbed surface with tapered edges or black.

**M052** 9.5mm x 90cm x 18.5m (roll)

## *Treadplate*

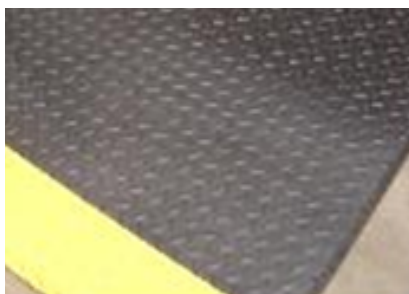


Black, treadplate surface with yellow tapered edges. Foam underside.

**M087** 9.5mm x 90cm x 1.85m

**M084** 9.5mm x 90cm x 1.85m (black)

## *Pebbled*



Black or grey pebbled surface with yellow tapered edges.

**M085** 9.5mm x 90cm x 18.5m (roll)

**M086** 9.5mm x 90cm x 1.5m

---

# SAFETY MATS

---

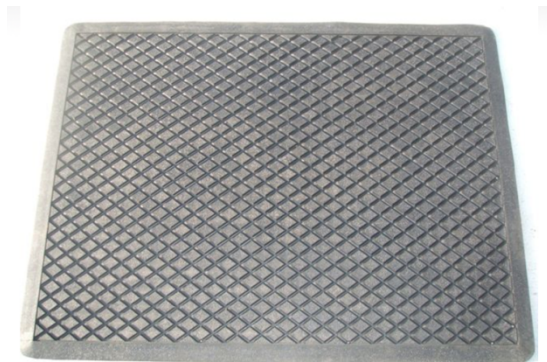
## *Solid Top*



**Part No:**  
M069

**Size**  
12mm x 90cm x 1.2m

## *Solid Top- Diamond*



**Part No:**  
M070

**Size**  
12mm x 90cm x 1.2m

---

# ERGONOMIC DOME MATS

---



---

Interlocking mats with a softer compound for the relief of leg and back stress

**M072** 80cm x 80cm Individual, end or centre mats with yellow edging

**M073** 1m x 1.5m Individual only

Individual, end or centre mats with black or yellow edging

**M074** 91cm x 61cm

**M075** 91cm x 1.25m

Individual black mat with black edging

**M076** 1m x 75cm

**M077** 1m x 1.5m

Individual nitrile mats in terracotta

**M078** 91cm x 1.25m

---

---

# MATTING

---

## *Electrical Insulation Mats*

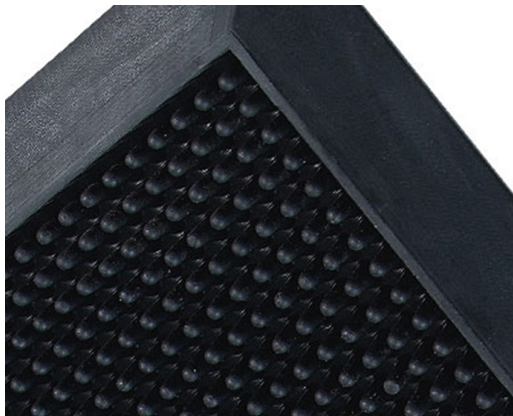


Textured finish to A.S 2978 Class 'A'

**Part No**  
M002

**Size**  
6.3mm x 1m x 10m

## *Fingertip Mats*



Fully ramped

**Part No**  
M044-2  
M044  
M044-1

12mm x 68cm x 45cm  
12mm x 61cm x 81cm  
14mm x 92cm x 1.83m



---

# MATTING

---

## *Industrial Scrapper*



Multi Directional lugs with fingertips to scrape dirt  
**M079** 50cm x 1m

## *Safetylok - Interlocking*

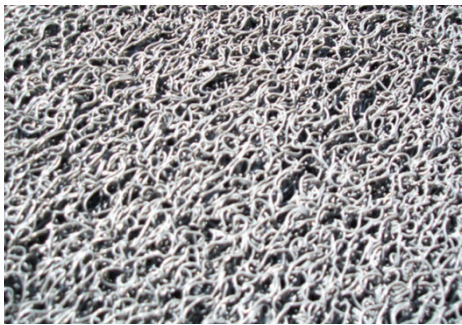


Solid, ramped mats with non-slip treadplate surface. Individual, centre or end mats that clip together to create continuous lengths.

Available in black, or black with yellow edges

**Same as:** M023-4 with chequer plate design  
M023-4FR  
M023-5

## *PVC Noodle Mat*



Ramped, black or grey

**M081** 90cm x 60cm

**M082** 90cm x 1.5m

---

# RIBBED RUBBER MATTING

---

## Fine Rib Mats



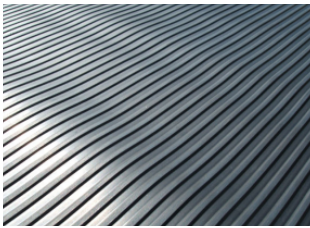
SBR Compound

**Part No:**

**Size**

M014	3.5mm x 1m x 10m
M014W	3.5mm x 1.2m 10m (white only)
M015	3.5mm x 1.25m x 10m
M016G	3.5mm x 1.5m x 10m (grey)
M016-2	3.5mm x 1.5m x 10m (textured back)
M016-2S	3.5mm x 1.5m x 10m (smooth back)
M016-4	3.5mm x 1.83m x 10m
M016-3	3.5mm x 2.00m x 10m
M097	5.00mm x 1.5m x 10m
M098	5.00mm x 1.83m x 10m
M099	5.00mm x 2.00m x 10m
M100	6.00mm x 1.2m x 10m

## Medium Rib Mats

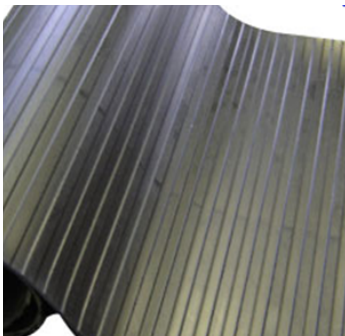


**Part No:**

**Size**

M010	3.5mm x 1m x 10m
------	------------------

## Big Rib Mats



SBR Compound

**Part No:**

**Size**

M022-0	3.5mm x 0.92m x 10m
M022	3.5mm x 1.00m x 10m
M022-1	3.5mm x 1.25m x 10m
M022-2	3.5mm x 1.5m x 10m
M022-3	3.5mm x 1.83m x 10m
M022-4	3.5mm x 2.00m x 10m
M022-7	5.00mm x 1.52m x 10m
M022-6	5.00mm x 1.83m x 10m
M022-5	5.00mm x 2.00m x 10m

## Heavy Rib Mats



**Part No: Size**

M017	6.00mm x 1.2m x 10m
------	---------------------

---

# EQUINE MATTING

---

## *Single Rib*



Concave rib surface with a hammer finish on the underside

**Part no:**  
M056-1

**Size**  
17mm x 1.2m x 1.8m

## *Eze handler*



Puzzle edges on all sides, textured non-slip surface, heavy grooved underside, smaller size for easy handling

**Part no:**  
M088

**Size**  
18mm x 91cm x 1.52m

## *Tailgate*



Chunky ribs running across the width for traction

**Part no:**  
M089  
M090

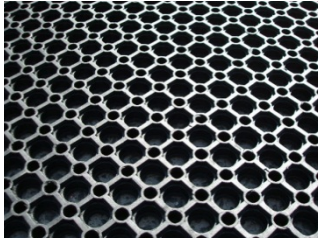
**Size**  
1.2m x 2.4m  
1.5m x 1.75m

---

# EQUINE MATTING

---

## Horse Mat



Wash down or float mat with holes

Part No	Size
M091	23mm x 1.5m x 1m

## Stall Padding



Wash down or float mat with holes

Part No	Size
M092	25mm x 1.2m x 1.45m
M093	45mm x 1.2m x 1.8m

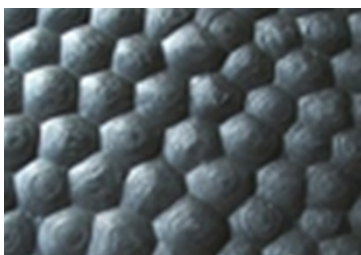
## Uncured Sheet



Non-slip mat, excellent value and quality

Part No	Size
M042	10mm x 1.2m x 1.8m
M043	10mm x 1.2m x 2.0m

## Cow Matting



Non-slip pebbled surface. Insulates against cold and dampness.

Part No	Size
M049	10mm x 2m x 10m (roll only)
M049-1	8mm x 2m x 10m (roll only)



# CARAVAN & SHOWER MATTING

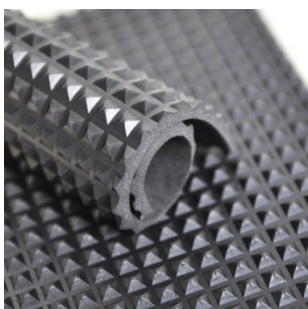
## *Kleenrite Rubber*



**Part No:**  
M011

**Size**  
3.0mm x 1.2m x 10m

## *Pyramid Rubber*



**Part No:**  
M012  
M012-1

**Size**  
3.00mm x 1m x 10m  
3.00mm x 1m x 1.2m grey

## *Tube Tread Mat*

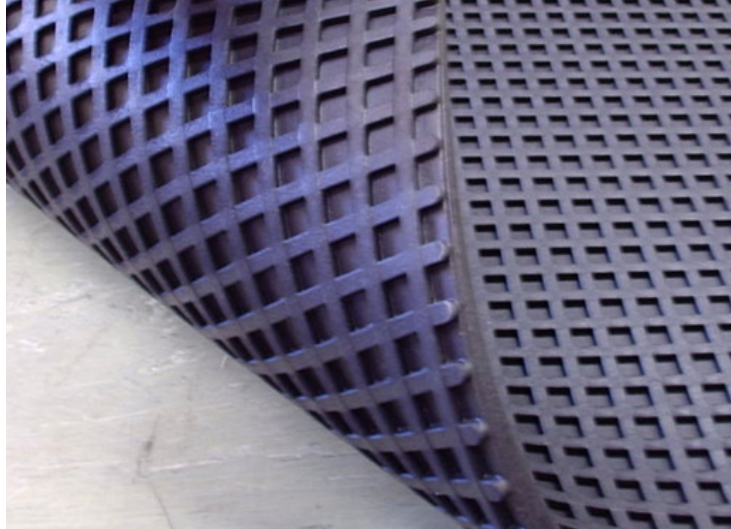


**Part No:**  
M101

**Size**  
910mm rolls

# MACHINERY MOUNTING MATS

---



---

An inexpensive material for effective control of machinery vibration, shock and acoustic noise

<b>Part No:</b>	<b>Size</b>
M003	450mm x 450mm x 8mm thick
Each pad weighs 1.7kgs	

---

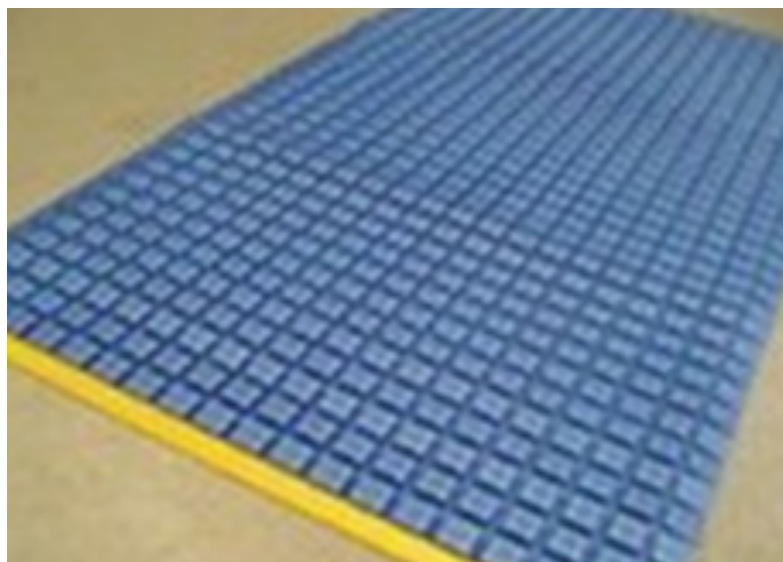
---

# SOFT-CUBISM ANTI-FATIGUE MAT

---



Industrial anti fatigue/safety matting is often overlooked by many companies. The cost saving for companies that use matting effectively is substantial. Anti-fatigue/safety matting reduces down time due to absenteeism and medical claims due to fatigue and strain, increases worker productivity, morale and job satisfaction because it improves employee comfort. When properly applied, floor matting can help companies comply with State and Federal Occupational Health and Safety codes of practice.



**Uses:** All wet, dry and grassy areas

**Surface:** Raised solid squares with deep ridges and valleys in between

**Compound:** Unique cross-linked polyethylene foam

**Benefit:** Extremely light weight. Even a small person can roll up a 6 meter mat, pick it up and take it away for cleaning. Impervious to oils, acids, chlorine and solvents. When used in a bar it prevents breakage of dropped items such as glasses and bottles. Excellent fatigue support and slip resistance.

**Border:** Bevels on all sides

**Thickness:** 14mm

**Colours:** Black, Blue, Grey, Red, Green, Brown, Cream and Yellow

**Sizes:** 700mm X 860mm  
700mm X 1600mm  
1000mm X 1600mm  
1000mm X 3100mm  
1200mm x 2000mm  
Other sizes available upon request

**Part No:** M050

---

# RECYLED MATTING

---

Recycled rubber matting offers the end user significant cost savings over virgin rubber matting. From horse floats to automotive uses the range of thicknesses will cover every application. The rubber matting provides superior qualities of slip resistance, foot and leg anti-fatigue, durability and versatility.

Manufactured in 1.2Metre wide x 10Metre long rolls and is available in 600kg/m<sup>3</sup>, 800kg/m<sup>3</sup> and 1000kg/m<sup>3</sup> densities. The 600 and 800 (density) series product is used in less extreme applications whilst the 1000 (density) series is suitable for heavy applications.



The 600 and 800 series is permeable and the 1000 series is only slightly permeable being both made from polymetrically bound recycled rubber. For applications requiring adhesion to the substrate we recommend Sikaflex polyurethane adhesives.

Part No	Size
M102	1200 x 10mm 800 Series
M103	1200 x 10mm 600 Series
M104	1200 x 10mm 1000 Series

## Examples of use

- Industrial and rubber sheet applications
- Vibration dampening pads
- Acoustic control under concrete slabs
- Industrial flooring
- Truck, ute and horse float floors
- Load securement
- Friction matting for pipes and sensitive freight
- Anti-slip and anti-fatigue matting
- Barbell flooring
- Mudflaps and ballast membranes

---

# FOOTWEAR WIPER MATS

---



Ideal for cleaning foot wear before entry into buildings, ships, launches, food areas and refrigeration. Can be set in concrete or bolted to retain security and safety

**Part No:** M046    **Size:** 390mm x 310mm  
Natural Rubber 60ShA

# PVC Non Slip Matting

## Technical Data Sheet

TYPICAL PHYSICAL PROPERTIES		
Polymer	PVC Cotton Backed	
Colour	Black	
Wear resistance	EN660-2	T level (GROUPT/8000)
Ozone resistance	Good	
Oil resistance	Excellent	
Electrical resistance	EN1081	≤10
Thickness	2.5mm	
Width	Up to 2400mm	
Weight	2.75kg per sm	
Roll length	Max 15m	
Non Slip Performance	DIN51130	R10
Sound Insulation	ISO717-2	18D8
Chemical Resistance	Good	

FEATURES	
• 100% Virgin PVC	• Fire resistant
• Environmentally Friendly	• Shock absorbent
• Non-Toxic	• Oil & Chemical Resistant
• Odourless	• Anti-bacterial
• Colour will not fade	• UV Resistant
• Waterproof	• Brushed fibre back for ease of adhesion and sound proofing
• Non-slip surface	
• Abrasion resistance	
• Soft comfortable feel under foot	



Suitable for swimming pools, boats, bathrooms, walkways, hotels, caravans  
and anywhere where non-slip matting is required

Available in chequerplate and studded pattern.

Whilst every effort has been made to supply accurate information this  
Specification should be used as a guide only. Complete Rubber reserves the right  
To make specification changes without notice or without incurring liability